

J.C. Broderick & Associates, Inc.

Environmental / Construction Consulting & Testing



1775 Expressway Drive North
Hauppauge, NY 11788
631.584.5492
Fax: 631.584.3395
www.jcbroderick.com

August 16, 2024

Mr. Emmett Urban
Western Suffolk BOCES
507 Deer Park Avenue
Dix Hills, New York 11746

Re: **Lead in Water Sampling**
L.A Wilson Technological Center - Northport
James E. Allen School – Dix Hills
Career Center – Building A
Jones Hall II

JCB#: **23-53913**

Dear Mr. Urban:

J.C. Broderick & Associates, Inc. (JCB) was retained to perform lead in water sampling of newly installed/replaced outlets at the above referenced school building(s).

The sampling was performed in accordance with Subpart 67-4 of Title 10 (Health) of the Official Compilation of Codes, Rules and Regulations of the State of New York. Each sample was assigned unique identification numbers, logged into a chain of custody document, and delivered to and Environmental Laboratory Approval Program (ELAP) accredited laboratory for analysis.

Based upon this regulation, any outlets which reveal concentrations of 5 parts per billion (ppb) or less can be put into service for unrestricted use, including cooking or drinking. Any outlet which reveals concentrations greater than this action level must remain restricted for cooking and drinking purposes.

Please reference the chain of custody document and laboratory report for details pertaining to the sample locations and results.

Sincerely,

A handwritten signature in cursive script, appearing to read 'George Greve', is written in black ink.

George Greve
J C Broderick & Associates, Inc.



Laboratory Lead in Water Results

J. C. BRODERICK AND ASSOCIATES, INC.

1775 Expressway North Hauppauge, NY 11788

TEL: (631) 584-5492 FAX: (631) 584-3395

JCB #: 23-53913

Western Suffolk BOCES

L.A. Wilson Technological Manor Plains School

Outlet Number	Room Name	Space ID	Outlet Type	Potable/ Applicable/ RFI	Initial Sample Date	Initial Result (ppb)	Post Remediation Sample Date	Post Remediation Result (ppb)	Remediation Actions/Current Status
WSB-0001	Custodial Office Bathroom	1001C	Bathroom Faucet	Non-Applicable					Placarded for Non-Drinking Use
WSB-0002	Receiving 100A	1002A	Hand Wash Only	Non-Applicable					Placarded for Non-Drinking Use
WSB-0003	Kitchen	1003	Kitchen Faucet (Cold)	Non-Applicable					Placarded for Non-Drinking Use
WSB-0004	Kitchen	1003	Kitchen Faucet (Cold)	Non-Applicable					Placarded for Non-Drinking Use
WSB-0005	Kitchen	1003	Kitchen Faucet (Cold)	Non-Potable	6/11/2024	<1.00 ND			Result Below Action Level Continue O&M
WSB-0006	Kitchen	1003	Spray Nozzle	Non-Potable	6/11/2024	4.9			Result Below Action Level Continue O&M
WSB-0007	Kitchen	1003	Kitchen Faucet (Cold)	Potable	6/11/2024	1.8			Result Below Action Level Continue O&M
WSB-0008	Kitchen	1003	Kitchen Faucet (Cold)	Non-Applicable					Placarded for Non-Drinking Use
WSB-0011	Custodial Closet	1006	Slop Sink	Non-Applicable					Placarded for Non-Drinking Use
WSB-0012	Room 104 Food Service	1007	Spray Nozzle	Non-Applicable					Placarded for Non-Drinking Use
WSB-0013	Room 104 Food Service	1007	Hand Wash Only	Non-Applicable	3/4/2023	<3.0 ND			Placarded for Non-Drinking Use
WSB-0014	Room 104 Food Service	1007	Kitchen Faucet (Cold)	Non-Applicable					Placarded for Non-Drinking Use
WSB-0015	Room 104 Food Service	1007	Hand Wash Only	Non-Applicable					Placarded for Non-Drinking Use
WSB-0016	Room 104 Food Service	1007	Kitchen Faucet (Cold)	Potable	6/11/2024	1.3			Result Below Action Level Continue O&M
WSB-0017	Room 104 Food Service	1007	Ice Machine	Potable	6/11/2024	<1.00 ND			Result Below Action Level Continue O&M
WSB-0018	Automotive Room 105	1009	Hand Wash Only	Non-Applicable					Placarded for Non-Drinking Use

L.A. Wilson Technological Manor Plains School

Outlet Number	Room Name	Space ID	Outlet Type	Potable/ Applicable/ RFI	Initial Sample Date	Initial Result (ppb)	Post Remediation Sample Date	Post Remediation Result (ppb)	Remediation Actions/Current Status
WSB-0019	Automotive Room 105	1009	Hand Wash Only	Non-Applicable					Placarded for Non-Drinking Use
WSB-0021	Automotive Classroom 105A	1011	Hand Wash Only	Non-Applicable					Placarded for Non-Drinking Use
WSB-0022	Automotive Classroom 105A	1011	Hand Wash Only	Non-Applicable					Placarded for Non-Drinking Use
WSB-0023	Retail Room 106	1010	Kitchen Faucet (Cold)	Potable	6/11/2024	<1.00 ND			Result Below Action Level Continue O&M
WSB-0024	Women's Bathroom	1012	Tempered Water Outlet	Non-Applicable					Placarded for Non-Drinking Use
WSB-0025	Men's Bathroom	1013	Tempered Water Outlet	Non-Applicable					Placarded for Non-Drinking Use
WSB-0026	Room 107 Kitchen	1015A	Kitchen Faucet (Cold)	Potable	6/11/2024	<1.00 ND			Result Below Action Level Continue O&M
WSB-0027	Staff Women's Bathroom	1018	Tempered Water Outlet	Non-Applicable					Placarded for Non-Drinking Use
WSB-0028	Staff Men's Bathroom	1019	Tempered Water Outlet	Non-Applicable					Placarded for Non-Drinking Use
WSB-0029	Main Office Bathroom	1020D	Tempered Water Outlet	Non-Applicable					Placarded for Non-Drinking Use
WSB-0030	Nurses Office	1034	Nurse's Office Sink	Potable	6/11/2024	4.3			Result Below Action Level Continue O&M
WSB-0031	Nurses Office Bathroom	1034C	Tempered Water Outlet	Non-Applicable					Placarded for Non-Drinking Use
WSB-0032	Room 111	1037	Classroom Faucet	Non-Applicable					Placarded for Non-Drinking Use
WSB-0036	Custodial Closet Across 113B	1024	Slop Sink	Non-Applicable					Placarded for Non-Drinking Use
WSB-0041	Room 112	1028	Classroom Faucet	Non-Applicable					Placarded for Non-Drinking Use
WSB-0042	Room 116	1030	Hose Bib	Non-Applicable					Placarded for Non-Drinking Use
WSB-0043	Room 116	1030	Classroom Faucet	Non-Applicable					Placarded for Non-Drinking Use
WSB-0044	Room 116	1030	Classroom Faucet	Non-Applicable					Placarded for Non-Drinking Use
WSB-0046	Room 115	1031	Classroom Faucet	Non-Applicable					Placarded for Non-Drinking Use
WSB-0047	Room 115	1031	Classroom Faucet	Non-Applicable					Placarded for Non-Drinking Use

L.A. Wilson Technological Manor Plains School

Outlet Number	Room Name	Space ID	Outlet Type	Potable/ Applicable/ RFI	Initial Sample Date	Initial Result (ppb)	Post Remediation Sample Date	Post Remediation Result (ppb)	Remediation Actions/Current Status
WSB-0048	Room 113 Offset Printing	1027	Classroom Faucet	Non-Applicable					Placarded for Non-Drinking Use
WSB-0049	Room 113 Offset Printing	1027	Classroom Faucet	Non-Applicable					Placarded for Non-Drinking Use
WSB-0050	Room 113B Printing Storage	1025	Hose Bib	Non-Applicable					Placarded for Non-Drinking Use
WSB-0052	Room 209	1052	Classroom Faucet	Non-Applicable					Placarded for Non-Drinking Use
WSB-0054	Room 211	1054	Classroom Faucet	Non-Applicable					Placarded for Non-Drinking Use
WSB-0056	Room 213	1056	Classroom Faucet	Non-Applicable					Placarded for Non-Drinking Use
WSB-0057	Cosmetology Room 215	1057	Classroom Faucet	Non-Applicable					Placarded for Non-Drinking Use
WSB-0058	Cosmetology Room 215	1057	Classroom Faucet	Non-Applicable					Placarded for Non-Drinking Use
WSB-0059	Cosmetology Room 215	1057	Classroom Faucet	Non-Applicable					Placarded for Non-Drinking Use
WSB-0060	Cosmetology Room 215	1057	Washing Machine	Non-Applicable					Placarded for Non-Drinking Use
WSB-0061	Room 219	1061	Classroom Faucet	Non-Applicable					Placarded for Non-Drinking Use
WSB-0062	Room 218/217	1060	Classroom Faucet	Non-Potable	6/11/2024	<1.00 ND			Result Below Action Level Continue O&M
WSB-0063	Room 218/217	1060	Classroom Faucet	Non-Applicable					Placarded for Non-Drinking Use
WSB-0064	Room 214	1058	Classroom Faucet	Non-Applicable					Placarded for Non-Drinking Use
WSB-0065	Room 214	1058	Bottle Fill Station	Potable	6/11/2024	<1.00 ND			Result Below Action Level Continue O&M
WSB-0066	Room 214	1058	Kitchen Faucet (Cold)	Potable	6/11/2024	<1.00 ND			Result Below Action Level Continue O&M
WSB-0067	Room 214	1058	Spray Nozzle	Non-Potable	6/11/2024	1.1			Result Below Action Level Continue O&M
WSB-0068	Room 214	1058	Dish Washer	Non-Applicable					Placarded for Non-Drinking Use
WSB-0069	Room 212	1055	Classroom Faucet	Non-Applicable					Placarded for Non-Drinking Use
WSB-0071	Room 210	1053	Classroom Faucet	Non-Applicable					Placarded for Non-Drinking Use

L.A. Wilson Technological Manor Plains School

Outlet Number	Room Name	Space ID	Outlet Type	Potable/ Applicable/ RFI	Initial Sample Date	Initial Result (ppb)	Post Remediation Sample Date	Post Remediation Result (ppb)	Remediation Actions/Current Status
WSB-0072	Room 218/217	1060	Bubbler	Potable	6/11/2024	OOS			Testing Required Before Return to Service
WSB-0073	Men's Bathroom	1050	Tempered Water Outlet	Non-Applicable					Placarded for Non-Drinking Use
WSB-0074	Men's Bathroom	1050	Tempered Water Outlet	Non-Applicable					Placarded for Non-Drinking Use
WSB-0076	Custodial Closet	1049	Slop Sink	Non-Applicable					Placarded for Non-Drinking Use
WSB-0077	Room 207	1044	Classroom Faucet	Non-Applicable					Placarded for Non-Drinking Use
WSB-0078	Room 208	1045	Classroom Faucet	Non-Applicable					Placarded for Non-Drinking Use
WSB-0079	Room 206	1043	Classroom Faucet	Non-Applicable					Placarded for Non-Drinking Use
WSB-0080	Room 202 Veterinary Assisting	1067	Classroom Faucet	Non-Applicable					Placarded for Non-Drinking Use
WSB-0081	Room 201	1039	Classroom Faucet	Non-Applicable					Placarded for Non-Drinking Use
WSB-0082	Room 201	1039	Spray Nozzle	Non-Applicable					Placarded for Non-Drinking Use
WSB-0083	Veterinary Assisting 203	1040	Classroom Faucet	Non-Applicable					Placarded for Non-Drinking Use
WSB-0084	Veterinary Assisting 203	1040	Dish Washer	Non-Applicable					Placarded for Non-Drinking Use
WSB-0085	Veterinary Assisting 203	1040	Classroom Faucet	Non-Applicable					Placarded for Non-Drinking Use
WSB-0086	Veterinary Assisting 203	1040	Spray Nozzle	Non-Applicable					Placarded for Non-Drinking Use
WSB-0087	Veterinary Assisting 203	1040	Classroom Faucet	Non-Applicable					Placarded for Non-Drinking Use
WSB-0088	Veterinary Assisting 203	1040	Spray Nozzle	Non-Applicable					Placarded for Non-Drinking Use
WSB-0090	Women's Bathroom	1047	Tempered Water Outlet	Non-Applicable					Placarded for Non-Drinking Use
WSB-0091	Women's Bathroom	1047	Tempered Water Outlet	Non-Applicable					Placarded for Non-Drinking Use
WSB-0092	Women's Bathroom	1047	Tempered Water Outlet	Non-Applicable					Placarded for Non-Drinking Use
WSB-0101		Exterior	Hose Bib	Non-Applicable					Placarded for Non-Drinking Use

L.A. Wilson Technological Manor Plains School

Outlet Number	Room Name	Space ID	Outlet Type	Potable/ Applicable/ RFI	Initial Sample Date	Initial Result (ppb)	Post Remediation Sample Date	Post Remediation Result (ppb)	Remediation Actions/Current Status
WSB-0877	Corridor Kitchen To Main Entrance	1014	Water Cooler	Potable	6/11/2024	<1.00 ND			Result Below Action Level Continue O&M
WSB-0878	Corridor Kitchen To Main Entrance	1014	Bottle Fill Station	Potable	6/11/2024	<1.00 ND			Result Below Action Level Continue O&M
WSB-0879	Corridor From Room 109 To Room 116	1032	Water Cooler	Potable	6/11/2024	<1.00 ND			Result Below Action Level Continue O&M
WSB-0880	Corridor From Room 109 To Room 116	1032	Bottle Fill Station	Potable	6/11/2024	<1.00 ND			Result Below Action Level Continue O&M
WSB-0881	Corridor From 201 To 218	1062	Water Cooler	Potable	6/11/2024	<1.00 ND			Result Below Action Level Continue O&M
WSB-0882	Corridor From 201 To 218	1062	Bottle Fill Station	Potable	6/11/2024	<1.00 ND			Result Below Action Level Continue O&M
WSB-1387	Kitchen Bathroom	1003A	Bathroom Faucet	Non-Applicable					Placarded for Non-Drinking Use
WSB-1388	Automotive Room 105	1009	Water Fountain-No Chiller	Potable	6/11/2024	<1.00 ND			Result Below Action Level Continue O&M
WSB-1389	Girls Bathroom	1022	Tempered Water Outlet	Non-Applicable					Placarded for Non-Drinking Use
WSB-1390	Girls Bathroom	1022	Tempered Water Outlet	Non-Applicable					Placarded for Non-Drinking Use
WSB-1391	Girls Bathroom	1022	Tempered Water Outlet	Non-Applicable					Placarded for Non-Drinking Use
WSB-1392	Girls Bathroom	1022	Hose Bib	Non-Applicable					Placarded for Non-Drinking Use
WSB-1393	Men's Bathroom	1026	Bathroom Faucet	Non-Applicable					Placarded for Non-Drinking Use
WSB-1394	Men's Bathroom	1026	Bathroom Faucet	Non-Applicable					Placarded for Non-Drinking Use
WSB-1395	Men's Bathroom	1026	Bathroom Faucet	Non-Applicable					Placarded for Non-Drinking Use
WSB-1396	Men's Bathroom	1026	Bathroom Faucet	Non-Applicable					Placarded for Non-Drinking Use
WSB-1397	Men's Bathroom	1026	Hose Bib	Non-Applicable					Placarded for Non-Drinking Use
WSB-1398	Room 112	1028	Washing Machine	Non-Applicable					Placarded for Non-Drinking Use
WSB-1401	Men's Bathroom	1050	Tempered Water Outlet	Non-Applicable					Placarded for Non-Drinking Use
WSB-1402	Exterior	Exterior	Hose Bib	Non-Applicable					Placarded for Non-Drinking Use

L.A. Wilson Technological Manor Plains School

Outlet Number	Room Name	Space ID	Outlet Type	Potable/ Applicable/ RFI	Initial Sample Date	Initial Result (ppb)	Post Remediation Sample Date	Post Remediation Result (ppb)	Remediation Actions/Current Status
WSB-1403	Exterior	Exterior	Hose Bib	Non-Applicable					Placarded for Non-Drinking Use
WSB-1404	Exterior	Exterior	Hose Bib	Non-Applicable					Placarded for Non-Drinking Use
WSB-1405	Exterior	Exterior	Hose Bib	Non-Applicable					Placarded for Non-Drinking Use
WSB-1406	Exterior	Exterior	Hose Bib	Non-Applicable					Placarded for Non-Drinking Use
WSB-1407	Exterior	Exterior	Hose Bib	Non-Applicable					Placarded for Non-Drinking Use
WSB-1408	Exterior	Exterior	Hose Bib	Non-Applicable					Placarded for Non-Drinking Use
WSB-1409	Exterior	Exterior	Hose Bib	Non-Applicable					Placarded for Non-Drinking Use
WSB-1410	Exterior	Exterior	Hose Bib	Non-Applicable					Placarded for Non-Drinking Use
WSB-1411	Exterior	Exterior	Hose Bib	Non-Applicable					Placarded for Non-Drinking Use

L.A. Wilson Technological Center

Outlet Number	Room Name	Space ID	Outlet Type	Potable/ Applicable/ RFI	Initial Sample Date	Initial Result (ppb)	Post Remediation Sample Date	Post Remediation Result (ppb)	Remediation Actions/Current Status
WSB-0104	Cosmetology	1004	Washing Machine	Non-Applicable					Placarded for Non-Drinking Use
WSB-0105	Cosmetology	1004	Classroom Faucet	Non-Applicable					Placarded for Non-Drinking Use
WSB-0106	Cosmetology	1004	Classroom Faucet	Non-Applicable					Placarded for Non-Drinking Use
WSB-0107	Cosmetology	1004	Classroom Faucet	Non-Applicable					Placarded for Non-Drinking Use
WSB-0108	Cosmetology	1004	Classroom Faucet	Non-Applicable					Placarded for Non-Drinking Use
WSB-0109	Cosmetology	1004	Classroom Faucet	Non-Applicable					Placarded for Non-Drinking Use
WSB-0110	Cosmetology	1004	Classroom Faucet	Non-Applicable					Placarded for Non-Drinking Use
WSB-0111	Cosmetology	1004	Classroom Faucet	Non-Applicable					Placarded for Non-Drinking Use
WSB-0112	Cosmetology	1004	Classroom Faucet	Non-Applicable					Placarded for Non-Drinking Use
WSB-0113	Cosmetology	1004	Classroom Faucet	Non-Applicable					Placarded for Non-Drinking Use
WSB-0114	Cosmetology	1004	Classroom Faucet	Non-Applicable					Placarded for Non-Drinking Use
WSB-0116	Cosmetology	1004	Washing Machine	Non-Applicable					Placarded for Non-Drinking Use
WSB-0117	Dispensary	1001	Classroom Faucet	Non-Applicable					Placarded for Non-Drinking Use
WSB-0120	Boys Bathroom	1003	Tempered Water Outlet	Non-Applicable					Placarded for Non-Drinking Use
WSB-0121	Cosmetology Dispensary	1004B	Classroom Faucet	Non-Applicable					Placarded for Non-Drinking Use
WSB-0122	Room 107	1010	Classroom Faucet	Non-Applicable					Placarded for Non-Drinking Use
WSB-0123	Multi Services Room Girls Bathroom	1006C	Tempered Water Outlet	Non-Applicable					Placarded for Non-Drinking Use
WSB-0124	Multi Services Room Girls Bathroom	1006C	Tempered Water Outlet	Non-Applicable					Placarded for Non-Drinking Use
WSB-0125	Multi Services Room	1006	Washing Machine	Non-Applicable					Placarded for Non-Drinking Use
WSB-0126	Multi Services Room	1006	Classroom Faucet	Non-Applicable					Placarded for Non-Drinking Use

L.A. Wilson Technological Center

Outlet Number	Room Name	Space ID	Outlet Type	Potable/ Applicable/ RFI	Initial Sample Date	Initial Result (ppb)	Post Remediation Sample Date	Post Remediation Result (ppb)	Remediation Actions/Current Status
WSB-0127	Multi Services Room	1006	Classroom Faucet	Non-Applicable					Placarded for Non-Drinking Use
WSB-0128	Multi Services Room	1006	Classroom Faucet	Non-Applicable					Placarded for Non-Drinking Use
WSB-0129	Multi Services Room	1006	Classroom Faucet	Non-Applicable					Placarded for Non-Drinking Use
WSB-0130	Multi Services Room	1006	Water Fountain-No Chiller	RFI	6/4/2024	9.1			Outlet Replaced By Sticker No. 1075 & 1076
WSB-0131	Multi Services Room	1006	Classroom Faucet	Non-Applicable					Placarded for Non-Drinking Use
WSB-0132	Multi Services Room	1006	Classroom Faucet	Non-Applicable					Placarded for Non-Drinking Use
WSB-0133	Multi Services Room	1006	Classroom Faucet	Non-Applicable					Placarded for Non-Drinking Use
WSB-0136	Room 102/101 Nurse Assisting	1015	Classroom Faucet	Non-Applicable					Placarded for Non-Drinking Use
WSB-0137	Corridor Outside Room 102	1019	Water Fountain-No Chiller	RFI	6/4/2024	<1.00 ND			Outlet Replaced by Sticker No. 1077 & 1078
WSB-0138	Laundry Room	1016	Washing Machine	Non-Applicable					Placarded for Non-Drinking Use
WSB-0139	Laundry Room	1016	Slop Sink	Non-Applicable					Placarded for Non-Drinking Use
WSB-0140	Unisex Bathroom Handicap	1020	Tempered Water Outlet	Non-Applicable					Placarded for Non-Drinking Use
WSB-0142	Staff Lounge Room 110	1024	Kitchen Faucet (Cold)	Potable	6/4/2024	<1.00 ND			Result Below Action Level Continue O&M
WSB-0143	Main Office Men's Bathroom	1030	Tempered Water Outlet	Non-Applicable					Placarded for Non-Drinking Use
WSB-0144	Main Office Ladies Bathroom	1032	Tempered Water Outlet	Non-Applicable					Placarded for Non-Drinking Use
WSB-0145	Main Office Ladies Bathroom	1032	Tempered Water Outlet	Non-Applicable					Placarded for Non-Drinking Use
WSB-0150	Automotive Shop Custodial Closet	1038C	Slop Sink	Non-Applicable					Placarded for Non-Drinking Use
WSB-0152	Automotive Shop	1038	Water Fountain-No Chiller	Potable	6/4/2024	<1.00 ND			Result Below Action Level Continue O&M
WSB-0153	Automotive Shop	1038	Classroom Faucet	Non-Applicable					Placarded for Non-Drinking Use
WSB-0154	Automotive Shop Office Room 117 Bathroom	1038E2	Bathroom Faucet	Non-Applicable					Placarded for Non-Drinking Use

L.A. Wilson Technological Center

Outlet Number	Room Name	Space ID	Outlet Type	Potable/ Applicable/ RFI	Initial Sample Date	Initial Result (ppb)	Post Remediation Sample Date	Post Remediation Result (ppb)	Remediation Actions/Current Status
WSB-0155	Automotive Shop	1038	Eye Wash	Non-Applicable					Placarded for Non-Drinking Use
WSB-0156	Automotive Shop	1038	Classroom Faucet	Non-Applicable					Placarded for Non-Drinking Use
WSB-0157	Automotive Shop 2 Tool Storage	1040B	Hose Bib	Non-Applicable					Placarded for Non-Drinking Use
WSB-0158	Automotive Shop	1038	Hose Bib	Non-Applicable					Placarded for Non-Drinking Use
WSB-0159	Automotive Shop	1038	Hose Bib	Non-Applicable					Placarded for Non-Drinking Use
WSB-0160	Automotive Shop	1038	Hose Bib	Non-Applicable					Placarded for Non-Drinking Use
WSB-0161	Automotive Shop	1038	Hose Bib	Non-Applicable					Placarded for Non-Drinking Use
WSB-0162	Automotive Shop	1038	Hose Bib	Non-Applicable					Placarded for Non-Drinking Use
WSB-0163	Men's Bathroom	2035	Bathroom Faucet	Non-Applicable					Placarded for Non-Drinking Use
WSB-0165	Ladies Bathroom	2034	Bathroom Faucet	Non-Applicable					Placarded for Non-Drinking Use
WSB-0166	Ladies Bathroom	2034	Bathroom Faucet	Non-Applicable					Placarded for Non-Drinking Use
WSB-0167	Room 201	2032	Nurse's Office Sink	Non-Applicable					Placarded for Non-Drinking Use
WSB-0168	Room 201	2032	Nurse's Office Sink	Non-Applicable					Placarded for Non-Drinking Use
WSB-0169	Room 207	2019	Kitchen Faucet (Cold)	Potable	6/4/2024	<1.00 ND			Result Below Action Level Continue O&M
WSB-0170	Custodial Closet	2017	Slop Sink	Non-Applicable					Placarded for Non-Drinking Use
WSB-0171	Faculty Bathroom	2016	Tempered Water Outlet	Non-Applicable					Placarded for Non-Drinking Use
WSB-0172	Corridor From Room 211 To Financial Aid Office	2014	Water Fountain-No Chiller	Potable	6/4/2024	<1.00 ND			Result Below Action Level Continue O&M
WSB-0173	Room 215	2001	Classroom Faucet	Non-Applicable					Placarded for Non-Drinking Use
WSB-0174	Room 213	2005	Classroom Faucet	Non-Applicable					Placarded for Non-Drinking Use
WSB-0175	Ladies Bathroom	2003	Tempered Water Outlet	Non-Applicable					Placarded for Non-Drinking Use

L.A. Wilson Technological Center

Outlet Number	Room Name	Space ID	Outlet Type	Potable/ Applicable/ RFI	Initial Sample Date	Initial Result (ppb)	Post Remediation Sample Date	Post Remediation Result (ppb)	Remediation Actions/Current Status
WSB-0176	Ladies Bathroom	2003	Tempered Water Outlet	Non-Applicable					Placarded for Non-Drinking Use
WSB-0177	Custodial Closet	2004	Slop Sink	Non-Applicable					Placarded for Non-Drinking Use
WSB-0178		Exterior	Hose Bib	Non-Applicable					Placarded for Non-Drinking Use
WSB-0179		Exterior	Hose Bib	Non-Applicable					Placarded for Non-Drinking Use
WSB-0180		Exterior	Hose Bib	Non-Applicable					Placarded for Non-Drinking Use
WSB-0181		Exterior	Hose Bib	Non-Applicable					Placarded for Non-Drinking Use
WSB-0182		Exterior	Hose Bib	Non-Applicable					Placarded for Non-Drinking Use
WSB-0183		Exterior	Hose Bib	Non-Applicable					Placarded for Non-Drinking Use
WSB-0184		Exterior	Hose Bib	Non-Applicable					Placarded for Non-Drinking Use
WSB-0185		Exterior	Hose Bib	Non-Applicable					Placarded for Non-Drinking Use
WSB-0883	Second Floor Main Corridor	2037	Bottle Fill Station	Potable	6/4/2024	<1.00 ND			Result Below Action Level Continue O&M
WSB-0884	Second Floor Main Corridor	2037	Water Cooler	Potable	6/4/2024	<1.00 ND			Result Below Action Level Continue O&M
WSB-0885	Main Office Corridor	1033	Bottle Fill Station	Potable	6/4/2024	<1.00 ND			Result Below Action Level Continue O&M
WSB-0886	Main Office Corridor	1033	Water Cooler	Potable	6/4/2024	<1.00 ND			Result Below Action Level Continue O&M
WSB-1073	Cosmetology	1004	Bottle Fill Station	Potable	8/9/2024	<1.0			Result Below Action Level Continue O&M
WSB-1074	Cosmetology	1004	Water Cooler	Potable	8/9/2024	<1.0			Result Below Action Level Continue O&M
WSB-1075	Multi Services Room	1006	Bottle Fill Station	Potable	8/9/2024	<1.0			Result Below Action Level Continue O&M
WSB-1076	Multi Services Room	1006	Water Cooler	Potable	8/9/2024	<1.0			Result Below Action Level Continue O&M
WSB-1077	Corridor Outside Room 102	1019	Bottle Fill Station	Potable	8/9/2024	<1.0			Result Below Action Level Continue O&M
WSB-1078	Corridor Outside Room 102	1019	Water Cooler	Potable	8/9/2024	<1.0			Result Below Action Level Continue O&M

L.A. Wilson Technological Center

Outlet Number	Room Name	Space ID	Outlet Type	Potable/ Applicable/ RFI	Initial Sample Date	Initial Result (ppb)	Post Remediation Sample Date	Post Remediation Result (ppb)	Remediation Actions/Current Status
WSB-1369	Cosmetology	1004	Water Fountain-No Chiller	RFI	6/4/2024	12.2			Outlet Replaced by Sticker No. 1073 & 1074
WSB-1370	Girls Bathroom	1002	Tempered Water Outlet	Non-Applicable					Placarded for Non-Drinking Use
WSB-1371	Girls Bathroom	1002	Tempered Water Outlet	Non-Applicable					Placarded for Non-Drinking Use
WSB-1372	Room 104	1013	Water Fountain-No Chiller	Potable	6/4/2024	<1.00 ND			Result Below Action Level Continue O&M
WSB-1373	Custodial Closet	1035	Slop Sink	Non-Applicable					Placarded for Non-Drinking Use
WSB-1374	Ladies Bathroom	2003	Hose Bib	Non-Applicable					Placarded for Non-Drinking Use
WSB-1375	Automotive Shop Bathroom	1038B	Tempered Water Outlet	Non-Applicable					Placarded for Non-Drinking Use
WSB-1376	Automotive Shop Bathroom	1038B	Tempered Water Outlet	Non-Applicable					Placarded for Non-Drinking Use
WSB-1377	Automotive Shop Bathroom	1038B	Hose Bib	Non-Applicable					Placarded for Non-Drinking Use
WSB-1378	Automotive Shop	1038	Hose Bib	Non-Applicable					Placarded for Non-Drinking Use
WSB-1379	Automotive Shop	1038	Hose Bib	Non-Applicable					Placarded for Non-Drinking Use

James E. Allen Alternative High School

Outlet Number	Room Name	Space ID	Outlet Type	Potable/ Applicable/ RFI	Initial Sample Date	Initial Result (ppb)	Post Remediation Sample Date	Post Remediation Result (ppb)	Remediation Actions/Current Status
WSB-0186	Room 101C Men's Bathroom	1006	Bathroom Faucet	Non-Applicable					Placarded for Non-Drinking Use
WSB-0187	Room 101A Women's Bathroom	1008	Hose Bib	Non-Applicable					Placarded for Non-Drinking Use
WSB-0188	Room 101A Women's Bathroom	1008	Bathroom Faucet	Non-Applicable					Placarded for Non-Drinking Use
WSB-0189	Room 102 Lounge	1012	Kitchen Faucet (Cold)	Potable	6/14/2024	<1.00 ND			Result Below Action Level Continue O&M
WSB-0190	Room 103 Wood Shop	1013	Classroom Faucet	Non-Applicable					Placarded for Non-Drinking Use
WSB-0191	Room 103A Bathroom	1013A	Bathroom Faucet	Non-Applicable					Placarded for Non-Drinking Use
WSB-0192	Room 106A/B	1017	Kitchen Faucet (Cold)	Potable	6/14/2024	<1.00 ND			Result Below Action Level Continue O&M
WSB-0193	Room 106F Bathroom	1016C	Bathroom Faucet	Non-Applicable					Placarded for Non-Drinking Use
WSB-0195	Custodian Room 104A	1018	Slop Sink	Non-Applicable					Placarded for Non-Drinking Use
WSB-0196	Room 108 Bathroom	1019A	Bathroom Faucet	Non-Applicable					Placarded for Non-Drinking Use
WSB-0197	Room 110A	1020A	Bathroom Faucet	Non-Applicable					Placarded for Non-Drinking Use
WSB-0198	Room 110	1020	Nurse's Office Sink	Non-Applicable					Placarded for Non-Drinking Use
WSB-0199	Room 105	1021	Classroom Faucet	Non-Applicable					Placarded for Non-Drinking Use
WSB-0200	Room 112	1022	Classroom Faucet	Non-Applicable					Placarded for Non-Drinking Use
WSB-0201	Room 107	1023	Classroom Faucet	Non-Applicable					Placarded for Non-Drinking Use
WSB-0202	Room 109	1024	Classroom Faucet	Non-Applicable					Placarded for Non-Drinking Use
WSB-0203	Room 111	1026	Classroom Faucet	Non-Applicable					Placarded for Non-Drinking Use
WSB-0204	Corridor From 124 To 125	1029	Bathroom Faucet	Non-Applicable					Placarded for Non-Drinking Use
WSB-0205	Room 114B Custodial Closet 114A	1030	Slop Sink	Non-Applicable					Placarded for Non-Drinking Use
WSB-0206	Room 127 Bathroom	1032	Bathroom Faucet	Non-Applicable					Placarded for Non-Drinking Use

James E. Allen Alternative High School

Outlet Number	Room Name	Space ID	Outlet Type	Potable/ Applicable/ RFI	Initial Sample Date	Initial Result (ppb)	Post Remediation Sample Date	Post Remediation Result (ppb)	Remediation Actions/Current Status
WSB-0207	Room 127 Bathroom	1032	Bathroom Faucet	Non-Applicable					Placarded for Non-Drinking Use
WSB-0208	Room 127 Bathroom	1032	Bathroom Faucet	Non-Applicable					Placarded for Non-Drinking Use
WSB-0209	Room 127 Bathroom	1032	Hose Bib	Non-Applicable					Placarded for Non-Drinking Use
WSB-0210	Room 114	1036	Classroom Faucet	Non-Applicable					Placarded for Non-Drinking Use
WSB-0211	Room 113	1035	Classroom Faucet	Non-Applicable					Placarded for Non-Drinking Use
WSB-0212	Room 115	1037	Classroom Faucet	Non-Applicable					Placarded for Non-Drinking Use
WSB-0213	Room 116	1038	Art Faucet	Non-Applicable					Placarded for Non-Drinking Use
WSB-0214	Room 117	1039	Classroom Faucet	Non-Applicable					Placarded for Non-Drinking Use
WSB-0215	Room 118	1040	Classroom Faucet	Non-Applicable					Placarded for Non-Drinking Use
WSB-0216	Bathroom 120A	1043A	Bathroom Faucet	Non-Applicable					Placarded for Non-Drinking Use
WSB-0217	Room 121	1042	Kitchen Faucet (Cold)	Non-Applicable					Placarded for Non-Drinking Use
WSB-0218	Room 121	1042	Spray Nozzle	Non-Applicable					Placarded for Non-Drinking Use
WSB-0219	Room 121	1042	Kitchen Faucet (Cold)	Non-Applicable					Placarded for Non-Drinking Use
WSB-0220	Room 121	1042	Kitchen Faucet (Cold)	Potable	6/14/2024	1.4			Result Below Action Level Continue O&M
WSB-0221	Room 121	1042	Kitchen Faucet (Cold)	Non-Applicable					Placarded for Non-Drinking Use
WSB-0222	Room 121C	1042B	Slop Sink	Non-Applicable					Placarded for Non-Drinking Use
WSB-0223	Room 121	1042	Kitchen Faucet (Cold)	Non-Applicable					Placarded for Non-Drinking Use
WSB-0224	Kitchen Bathroom 121B	1042B	Bathroom Faucet	Non-Applicable					Placarded for Non-Drinking Use
WSB-0225	Room 119	1041	Classroom Faucet	Non-Applicable					Placarded for Non-Drinking Use
WSB-0226	Corridor From 106 To 120	1044	Water Cooler	Potable	6/14/2024	<1.00 ND			Result Below Action Level Continue O&M

James E. Allen Alternative High School

Outlet Number	Room Name	Space ID	Outlet Type	Potable/ Applicable/ RFI	Initial Sample Date	Initial Result (ppb)	Post Remediation Sample Date	Post Remediation Result (ppb)	Remediation Actions/Current Status
WSB-0227	Room 215 Faculty Lounge	1049	Kitchen Faucet (Cold)	Potable	6/14/2024	1.7			Result Below Action Level Continue O&M
WSB-0228	Women's Bathroom	1048A	Bathroom Faucet	Non-Applicable					Placarded for Non-Drinking Use
WSB-0229	Men's Bathroom	1048B	Bathroom Faucet	Non-Applicable					Placarded for Non-Drinking Use
WSB-0231	Exit Vestibule Closet	1071F1	Slop Sink	Non-Applicable					Placarded for Non-Drinking Use
WSB-0232	Bathroom Adjacent To 220	1071D	Bathroom Faucet	Non-Applicable					Placarded for Non-Drinking Use
WSB-0233	Bathroom Across From 220	1071C	Bathroom Faucet	Non-Applicable					Placarded for Non-Drinking Use
WSB-0234	Room 209A Bathroom	1072A	Bathroom Faucet	Non-Applicable					Placarded for Non-Drinking Use
WSB-0235	Room 209D Laundry Room	1072B2	Washing Machine	Non-Applicable					Placarded for Non-Drinking Use
WSB-0238	Women's Bathroom	1056	Bathroom Faucet	Non-Applicable					Placarded for Non-Drinking Use
WSB-0239	Women's Bathroom	1056	Bathroom Faucet	Non-Applicable					Placarded for Non-Drinking Use
WSB-0240	Women's Bathroom	1056	Bathroom Faucet	Non-Applicable					Placarded for Non-Drinking Use
WSB-0241	Women's Bathroom	1056	Hose Bib	Non-Applicable					Placarded for Non-Drinking Use
WSB-0243	Men's Bathroom	1059	Bathroom Faucet	Non-Applicable					Placarded for Non-Drinking Use
WSB-0244	Men's Bathroom	1059	Bathroom Faucet	Non-Applicable					Placarded for Non-Drinking Use
WSB-0245	Men's Bathroom	1059	Bathroom Faucet	Non-Applicable					Placarded for Non-Drinking Use
WSB-0246	Men's Bathroom	1059	Bathroom Faucet	Non-Applicable					Placarded for Non-Drinking Use
WSB-0247	Men's Bathroom	1059	Hose Bib	Non-Applicable					Placarded for Non-Drinking Use
WSB-0248	Vending Room 200C Bathroom	1060	Bathroom Faucet	Non-Applicable					Placarded for Non-Drinking Use
WSB-0249	Room 205	1067	Kitchen Faucet (Cold)	Potable	6/14/2024	<1.00 ND			Result Below Action Level Continue O&M
WSB-0250	Custodial Office Bathroom 211A	1072B2	Bathroom Faucet	Non-Applicable					Placarded for Non-Drinking Use

James E. Allen Alternative High School

Outlet Number	Room Name	Space ID	Outlet Type	Potable/ Applicable/ RFI	Initial Sample Date	Initial Result (ppb)	Post Remediation Sample Date	Post Remediation Result (ppb)	Remediation Actions/Current Status
WSB-0251	Custodial Office Bathroom 211A	1072B2	Hose Bib	Non-Applicable					Placarded for Non-Drinking Use
WSB-0252	Bathroom 210	1073	Bathroom Faucet	Non-Applicable					Placarded for Non-Drinking Use
WSB-0254		Exterior	Hose Bib	Non-Applicable					Placarded for Non-Drinking Use
WSB-0255		Exterior	Hose Bib	Non-Applicable					Placarded for Non-Drinking Use
WSB-0257		Exterior	Hose Bib	Non-Applicable					Placarded for Non-Drinking Use
WSB-0258		Exterior	Hose Bib	Non-Applicable					Placarded for Non-Drinking Use
WSB-0260		Exterior	Hose Bib	Non-Applicable					Placarded for Non-Drinking Use
WSB-0262		Exterior	Hose Bib	Non-Applicable					Placarded for Non-Drinking Use
WSB-0861	Corridor From 106 To 120	1044	Bottle Fill Station	Potable	6/14/2024	<1.00 ND			Result Below Action Level Continue O&M
WSB-0862	Corridor From 106 To 120	1044	Water Cooler	Potable	6/14/2024	<1.00 ND			Result Below Action Level Continue O&M
WSB-0863	Corridor From Gym To Auditorium Room	1052	Bottle Fill Station	Potable	6/14/2024	<1.00 ND			Result Below Action Level Continue O&M
WSB-0864	Corridor From Gym To Auditorium Room	1052	Bottle Fill Station	Potable	6/14/2024	<1.00 ND			Result Below Action Level Continue O&M
WSB-0865	Gym	1051	Bottle Fill Station	Potable	6/14/2024	<1.00 ND			Result Below Action Level Continue O&M
WSB-1051	Room 101C Men's Bathroom	1006	Hose Bib	Non-Applicable					Placarded for Non-Drinking Use
WSB-1052	Room 102 Lounge	1012	Dish Washer	Non-Applicable					Placarded for Non-Drinking Use
WSB-1053	Room 125 Bathroom	1027	Bathroom Faucet	Non-Applicable					Placarded for Non-Drinking Use
WSB-1054	Room 125 Bathroom	1027	Bathroom Faucet	Non-Applicable					Placarded for Non-Drinking Use
WSB-1055	Room 125 Bathroom	1027	Bathroom Faucet	Non-Applicable					Placarded for Non-Drinking Use
WSB-1056	Room 125 Bathroom	1027	Hose Bib	Non-Applicable					Placarded for Non-Drinking Use
WSB-1057	Gym	1051	Water Cooler	Potable	6/14/2024	<1.00 ND			Result Below Action Level Continue O&M

James E. Allen Alternative High School

Outlet Number	Room Name	Space ID	Outlet Type	Potable/ Applicable/ RFI	Initial Sample Date	Initial Result (ppb)	Post Remediation Sample Date	Post Remediation Result (ppb)	Remediation Actions/Current Status
WSB-1058	Custodian Closet	1057	Slop Sink	Non-Applicable					Placarded for Non-Drinking Use
WSB-1059	Boiler Room 211C	1074C	Hose Bib	Non-Applicable					Placarded for Non-Drinking Use
WSB-1060	Boiler Room 211C	1074C	Hose Bib	Non-Applicable					Placarded for Non-Drinking Use
WSB-1061	Boiler Room 211C	1074C	Eye Wash	Non-Applicable					Placarded for Non-Drinking Use
WSB-1062	Boiler Room 211C	1074C	Hose Bib	Non-Applicable					Placarded for Non-Drinking Use
WSB-1063	Boiler Room 211C	1074C	Hose Bib	Non-Applicable					Placarded for Non-Drinking Use
WSB-1064		Exterior	Hose Bib	Non-Applicable					Placarded for Non-Drinking Use
WSB-1065		Exterior	Hose Bib	Non-Applicable					Placarded for Non-Drinking Use
WSB-1066		Exterior	Hose Bib	Non-Applicable					Placarded for Non-Drinking Use
WSB-1067		Exterior	Hose Bib	Non-Applicable					Placarded for Non-Drinking Use

James E. Allen School

Outlet Number	Room Name	Space ID	Outlet Type	Potable/ Applicable/ RFI	Initial Sample Date	Initial Result (ppb)	Post Remediation Sample Date	Post Remediation Result (ppb)	Remediation Actions/Current Status
WSB-0264	Corridor Along Room 519	1005	Water Cooler	RFI	6/13/2024	12.1			Outlet Replaced by Sticker No. 1069 & 1070
WSB-0265	Room 521 Bathroom	1002A	Bathroom Faucet	Non-Applicable					Placarded for Non-Drinking Use
WSB-0266	Custodial Closet	1003	Slop Sink	Non-Applicable					Placarded for Non-Drinking Use
WSB-0267	Physical Education Office 520 Bathroom	1007A1	Bathroom Faucet	Non-Applicable					Placarded for Non-Drinking Use
WSB-0268	Vestibule 519 Bathroom	1004A	Bathroom Faucet	Non-Applicable					Placarded for Non-Drinking Use
WSB-0269	Corridor Along Room 519	1005	Water Cooler	Potable	6/13/2024	<1.00 ND			Result Below Action Level Continue O&M
WSB-0271	Bathroom Outside Kitchen	1023	Bathroom Faucet	Non-Applicable					Placarded for Non-Drinking Use
WSB-0272	Kitchen	1024	Ice Machine	Non-Applicable	6/13/2024				Further Investigation Determined Outlet Function as Non-Applicable, Placarded for Non-Drinking Use
WSB-0273	Kitchen	1024	Kitchen Faucet (Cold)	Non-Applicable					Placarded for Non-Drinking Use
WSB-0274	Kitchen	1024	Spray Nozzle	Non-Applicable					Placarded for Non-Drinking Use
WSB-0275	Kitchen	1024	Kitchen Faucet (Cold)	Non-Applicable					Placarded for Non-Drinking Use
WSB-0276	Kitchen	1024	Kitchen Faucet (Cold)	Non-Applicable	3/4/2023	<3.0 ND			Placarded for Non-Drinking Use
WSB-0277	Kitchen	1024	Kitchen Faucet (Cold)	Non-Applicable					Placarded for Non-Drinking Use
WSB-0281	Corridor Of 600 Wing	1055	Water Cooler	Potable	6/13/2024	<1.00 ND			Result Below Action Level Continue O&M
WSB-0287	Room 628 & 629	1034	Classroom Faucet	Non-Applicable					Placarded for Non-Drinking Use
WSB-0289	Room 635 & 636	1037	Classroom Faucet	Non-Applicable					Placarded for Non-Drinking Use
WSB-0290	Storage Room 611	1050	Slop Sink	Non-Applicable					Placarded for Non-Drinking Use
WSB-0291	Room 613 & 614	1052	Classroom Faucet	Non-Applicable					Placarded for Non-Drinking Use
WSB-0292	Room 644 & 645 (Faculty Offices)	1042	Classroom Faucet	Non-Applicable					Placarded for Non-Drinking Use
WSB-0293	609 Second Staff Bathroom	1048	Bathroom Faucet	Non-Applicable					Placarded for Non-Drinking Use

James E. Allen School

Outlet Number	Room Name	Space ID	Outlet Type	Potable/ Applicable/ RFI	Initial Sample Date	Initial Result (ppb)	Post Remediation Sample Date	Post Remediation Result (ppb)	Remediation Actions/Current Status
WSB-0294	Staff Bathroom 608	1047	Bathroom Faucet	Non-Applicable					Placarded for Non-Drinking Use
WSB-0296	Staff Lounge	1043	Kitchen Faucet (Cold)	Potable	6/13/2024	<1.00 ND			Result Below Action Level Continue O&M
WSB-0297	Staff Lounge	1043	Spray Nozzle	Potable	6/13/2024	1.1			Result Below Action Level Continue O&M
WSB-0303	Room 419	1059	Classroom Faucet	Non-Applicable					Placarded for Non-Drinking Use
WSB-0304	Room 420 & 421	1060	Classroom Faucet	Non-Applicable					Placarded for Non-Drinking Use
WSB-0305	Room 403	1068	Classroom Faucet	Non-Applicable					Placarded for Non-Drinking Use
WSB-0308	Staff Bathroom 145	1141	Bathroom Faucet	Non-Applicable					Placarded for Non-Drinking Use
WSB-0309	Staff Bathroom 144	1140	Bathroom Faucet	Non-Applicable					Placarded for Non-Drinking Use
WSB-0310	Room 134	1138	Bathroom Faucet	Non-Applicable					Placarded for Non-Drinking Use
WSB-0311	Custodian Closet	1137	Slop Sink	Non-Applicable					Placarded for Non-Drinking Use
WSB-0312	Room 503 (Home Ec)	1012	Washing Machine	Non-Applicable					Placarded for Non-Drinking Use
WSB-0313	Room 503 (Home Ec)	1012	Classroom Faucet	Non-Applicable					Placarded for Non-Drinking Use
WSB-0314	Second Staff Bathroom 504	1011	Bathroom Faucet	Non-Applicable					Placarded for Non-Drinking Use
WSB-0315	Staff Bathroom 505	1010	Bathroom Faucet	Non-Applicable					Placarded for Non-Drinking Use
WSB-0320	Room 507 Nurse Bathroom	1008A	Bathroom Faucet	Non-Applicable					Placarded for Non-Drinking Use
WSB-0321	Room 507 Nurse	1008	Bottle Fill Station	Potable	6/13/2024	3.3			Result Below Action Level Continue O&M
WSB-0322	Room 564 OT/PT (Former Nurse)	1016	Kitchen Faucet (Cold)	Potable	6/13/2024	<1.00 ND			Result Below Action Level Continue O&M
WSB-0323	Room 564 OT/PT (Former Nurse) Bathroom	1016A	Bathroom Faucet	Non-Applicable					Placarded for Non-Drinking Use
WSB-0324	Copy Room Bathroom	1014B	Bathroom Faucet	Non-Applicable					Placarded for Non-Drinking Use
WSB-0325	Bathroom 133	1136	Bathroom Faucet	Non-Applicable					Placarded for Non-Drinking Use

James E. Allen School

Outlet Number	Room Name	Space ID	Outlet Type	Potable/ Applicable/ RFI	Initial Sample Date	Initial Result (ppb)	Post Remediation Sample Date	Post Remediation Result (ppb)	Remediation Actions/Current Status
WSB-0327	Main Corridor	1153	Water Cooler	Potable	6/13/2024	4.8			Result Below Action Level Continue O&M
WSB-0329	Room 326	1123	Classroom Faucet	Non-Applicable					Placarded for Non-Drinking Use
WSB-0330	Room 325	1122	Classroom Faucet	Non-Applicable					Placarded for Non-Drinking Use
WSB-0331	Room 324	1121	Classroom Faucet	Non-Applicable					Placarded for Non-Drinking Use
WSB-0341	Room 306 & 307	1111	Classroom Faucet	Non-Applicable					Placarded for Non-Drinking Use
WSB-0343	Room 303	1108	Slop Sink	Non-Applicable					Placarded for Non-Drinking Use
WSB-0344	Staff Bathroom 138	1152	Bathroom Faucet	Non-Applicable					Placarded for Non-Drinking Use
WSB-0345	Staff Bathroom 137	1151	Bathroom Faucet	Non-Applicable					Placarded for Non-Drinking Use
WSB-0346	Room 130/131 (Art Room)	1150	Art Faucet	Non-Applicable					Placarded for Non-Drinking Use
WSB-0347	Custodian Office Right Side Bathroom	1101B	Bathroom Faucet	Non-Applicable					Placarded for Non-Drinking Use
WSB-0348	Custodian Office Left Side Bathroom	1101A	Bathroom Faucet	Non-Applicable					Placarded for Non-Drinking Use
WSB-0349	Computer Room/Office	1102	Classroom Faucet	Non-Applicable					Placarded for Non-Drinking Use
WSB-0353	Room 110 (Home Ec)	1148	Home Economics Faucet (Cold)	Potable	6/13/2024	<1.00 ND			Result Below Action Level Continue O&M
WSB-0354	Room 110 (Home Ec)	1148	Home Economics Faucet (Cold)	Potable	6/13/2024	<1.00 ND			Result Below Action Level Continue O&M
WSB-0355	Room 110 (Home Ec)	1148	Washing Machine	Non-Applicable					Placarded for Non-Drinking Use
WSB-0356	Staff Bathroom 109	1147	Bathroom Faucet	Non-Applicable					Placarded for Non-Drinking Use
WSB-0357	Staff Bathroom 108	1146	Bathroom Faucet	Non-Applicable					Placarded for Non-Drinking Use
WSB-0364	Principal Office 428 Bathroom	1142A	Bathroom Faucet	Non-Applicable					Placarded for Non-Drinking Use
WSB-0365		EXTERIOR (Garth)	Hose Bib	Non-Applicable					Placarded for Non-Drinking Use
WSB-0366		EXTERIOR (Garth)	Hose Bib	Non-Applicable					Placarded for Non-Drinking Use

James E. Allen School

Outlet Number	Room Name	Space ID	Outlet Type	Potable/ Applicable/ RFI	Initial Sample Date	Initial Result (ppb)	Post Remediation Sample Date	Post Remediation Result (ppb)	Remediation Actions/Current Status
WSB-0838	200 Main Corridor Area	1099	Bubbler	Potable	6/13/2024	OOS			Testing Required Before Return to Service
WSB-0839	200 Main Corridor Area	1099	Bottle Fill Station	Potable	6/13/2024	<1.00 ND			Result Below Action Level Continue O&M
WSB-0840	Corridor And Main Lobby Of 400 Wing	1077	Bubbler	Potable	6/13/2024	OOS			Testing Required Before Return to Service
WSB-0841	Corridor And Main Lobby Of 400 Wing	1077	Bottle Fill Station	Potable	6/13/2024	<1.00 ND			Result Below Action Level Continue O&M
WSB-0844	Corridor Along Room 519	1005	Bubbler	Potable	6/13/2024	OOS			Testing Required Before Return to Service
WSB-0845	Corridor Along Room 519	1005	Bottle Fill Station	Potable	6/13/2024	<1.00 ND			Result Below Action Level Continue O&M
WSB-0846	Main Corridor	1153	Bottle Fill Station	Potable	6/13/2024	<1.00 ND			Result Below Action Level Continue O&M
WSB-0847	Corridor In 300 Wing	1133	Bubbler	Potable	6/13/2024	OOS			Testing Required Before Return to Service
WSB-0848	Corridor In 300 Wing	1133	Bottle Fill Station	Potable	6/13/2024	<1.00 ND			Result Below Action Level Continue O&M
WSB-0991	Room 503	1012	Dish Washer	Non-Applicable					Placarded for Non-Drinking Use
WSB-0992	Room 507 Nurse	1008	Nurse's Office Sink	Potable	6/13/2024	<1.00 ND			Result Below Action Level Continue O&M
WSB-0993	Room 507 Nurse	1008	Nurse's Office Sink	Non-Applicable					Placarded for Non-Drinking Use
WSB-0994	Vestibule Between Kitchen & Gym All-Gender Left	1024A1	Bathroom Faucet	Non-Applicable					Placarded for Non-Drinking Use
WSB-0995	Vestibule Between Kitchen & Gym All-Gender Right	1024A2	Bathroom Faucet	Non-Applicable					Placarded for Non-Drinking Use
WSB-0996	Kitchen	1024	Kitchen Faucet (Cold)	Potable	6/13/2024	1.0			Result Below Action Level Continue O&M
WSB-0997	Boys Bathroom	1031	Tempered Water Outlet	Non-Applicable					Placarded for Non-Drinking Use
WSB-0998	Boys Bathroom	1031	Hose Bib	Non-Applicable					Placarded for Non-Drinking Use
WSB-0999	Girls Bathroom	1032	Tempered Water Outlet	Non-Applicable					Placarded for Non-Drinking Use
WSB-1000	Girls Bathroom	1032	Hose Bib	Non-Applicable					Placarded for Non-Drinking Use
WSB-1001	Custodial Closet	1033	Slop Sink	Non-Applicable					Placarded for Non-Drinking Use

James E. Allen School

Outlet Number	Room Name	Space ID	Outlet Type	Potable/ Applicable/ RFI	Initial Sample Date	Initial Result (ppb)	Post Remediation Sample Date	Post Remediation Result (ppb)	Remediation Actions/Current Status
WSB-1002	Room 630 & 631	1035	Classroom Faucet	Non-Applicable					Placarded for Non-Drinking Use
WSB-1003	Room 643	1041	Classroom Faucet	Non-Applicable					Placarded for Non-Drinking Use
WSB-1004	Corridor of 600 Wing	1055	Bottle Fill Station	Potable	6/13/2024	<1.00 ND			Result Below Action Level Continue O&M
WSB-1005	Corridor of 600 Wing	1055	Bubbler	Potable	6/13/2024	OOS			Testing Required Before Return to Service
WSB-1006	Custodian Closet	1056	Slop Sink	Non-Applicable					Placarded for Non-Drinking Use
WSB-1007	Girls Bathroom Room 417	1057	Tempered Water Outlet	Non-Applicable					Placarded for Non-Drinking Use
WSB-1008	Girls Bathroom Room 417	1057	Tempered Water Outlet	Non-Applicable					Placarded for Non-Drinking Use
WSB-1009	Girls Bathroom Room 417	1057	Hose Bib	Non-Applicable					Placarded for Non-Drinking Use
WSB-1010	Boys Bathroom 415	1058	Tempered Water Outlet	Non-Applicable					Placarded for Non-Drinking Use
WSB-1012	Room 409	1073	Classroom Faucet	Non-Applicable					Placarded for Non-Drinking Use
WSB-1013	Room 305	1110	Classroom Faucet	Non-Applicable					Placarded for Non-Drinking Use
WSB-1014	Boys Bathroom 315	1115	Tempered Water Outlet	Non-Applicable					Placarded for Non-Drinking Use
WSB-1015	Boys Bathroom 315	1115	Hose Bib	Non-Applicable					Placarded for Non-Drinking Use
WSB-1016	Girls Bathroom Room 316	1116	Hose Bib	Non-Applicable					Placarded for Non-Drinking Use
WSB-1017	Girls Bathroom Room 316	1116	Tempered Water Outlet	Non-Applicable					Placarded for Non-Drinking Use
WSB-1018	Girls Bathroom Room 316	1116	Tempered Water Outlet	Non-Applicable					Placarded for Non-Drinking Use
WSB-1019	Custodian Storage Room 318	1117	Slop Sink	Non-Applicable					Placarded for Non-Drinking Use
WSB-1020	Room 320	1118	Classroom Faucet	Non-Applicable					Placarded for Non-Drinking Use
WSB-1021	Room 321	1119	Classroom Faucet	Non-Applicable					Placarded for Non-Drinking Use
WSB-1022	Room 322	1120	Classroom Faucet	Non-Applicable					Placarded for Non-Drinking Use

James E. Allen School

Outlet Number	Room Name	Space ID	Outlet Type	Potable/ Applicable/ RFI	Initial Sample Date	Initial Result (ppb)	Post Remediation Sample Date	Post Remediation Result (ppb)	Remediation Actions/Current Status
WSB-1023	Room 329	1124	Classroom Faucet	Non-Applicable					Placarded for Non-Drinking Use
WSB-1024	Custodian Storage 117	1103	Hose Bib	Non-Applicable					Placarded for Non-Drinking Use
WSB-1025	Custodian Storage 117	1103	Classroom Faucet	Non-Applicable					Placarded for Non-Drinking Use
WSB-1026	Custodian Storage 117	1103	Spray Nozzle	Non-Applicable					Placarded for Non-Drinking Use
WSB-1027	Custodian Storage 117	1103	Hose Bib	Non-Applicable					Placarded for Non-Drinking Use
WSB-1028	Boiler Room	1105	Hose Bib	Non-Applicable					Placarded for Non-Drinking Use
WSB-1029	Storage Room 228	1097	Slop Sink	Non-Applicable					Placarded for Non-Drinking Use
WSB-1030	Room 225/226	1095	Classroom Faucet	Non-Applicable					Placarded for Non-Drinking Use
WSB-1031	Boys Bathroom 218	1088	Tempered Water Outlet	Non-Applicable					Placarded for Non-Drinking Use
WSB-1032	Boys Bathroom 218	1088	Hose Bib	Non-Applicable					Placarded for Non-Drinking Use
WSB-1033	Girls Bathroom 216	1087	Tempered Water Outlet	Non-Applicable					Placarded for Non-Drinking Use
WSB-1034	Girls Bathroom 216	1087	Hose Bib	Non-Applicable					Placarded for Non-Drinking Use
WSB-1035		EXTERIOR (Garth)	Hose Bib	Non-Applicable					Placarded for Non-Drinking Use
WSB-1036		EXTERIOR (Garth)	Hose Bib	Non-Applicable					Placarded for Non-Drinking Use
WSB-1069	Corridor Along Room 519	1005	Bottle Fill Station	Potable	8/9/2024	<1.0			Result Below Action Level Continue O&M
WSB-1070	Corridor Along Room 519	1005	Water Cooler	Potable	8/9/2024	<1.0			Result Below Action Level Continue O&M

James E. Allen Junior-Senior High School

Outlet Number	Room Name	Space ID	Outlet Type	Potable/ Applicable/ RFI	Initial Sample Date	Initial Result (ppb)	Post Remediation Sample Date	Post Remediation Result (ppb)	Remediation Actions/Current Status
WSB-0369	Room 503 Faculty Room	1011	Classroom Faucet	Potable	6/12/2024	1.5			Result Below Action Level Continue O&M
WSB-0370	Room 503 Faculty Room	1011	Spray Nozzle	Potable	6/12/2024	1.8			Result Below Action Level Continue O&M
WSB-0371	Staff Bathroom	1010	Bathroom Faucet	Non-Applicable					Placarded for Non-Drinking Use
WSB-0372	Staff Bathroom	1009	Bathroom Faucet	Non-Applicable					Placarded for Non-Drinking Use
WSB-0373	Room 508 (ERL)	1005	Home Economics Faucet (Cold)	Non-Applicable					Placarded for Non-Drinking Use
WSB-0374	Room 508 Bathroom	1005A	Bathroom Faucet	Non-Applicable					Placarded for Non-Drinking Use
WSB-0376	Kitchen 517 Bathroom 522	1000A	Bathroom Faucet	Non-Applicable					Placarded for Non-Drinking Use
WSB-0377	Kitchen 517 Bathroom 522	1000A	Bathroom Faucet	Non-Applicable					Placarded for Non-Drinking Use
WSB-0378	Kitchen 517 Bathroom 522	1000A	Hose Bib	Non-Applicable					Placarded for Non-Drinking Use
WSB-0379	Kitchen 517 Bathroom 522	1000A	Slop Sink	Non-Applicable					Placarded for Non-Drinking Use
WSB-0380	Kitchen 517	1000	Kitchen Faucet (Cold)	Non-Applicable	6/12/2024	7.4			Further Investigation Determined Outlet Function as Non-Applicable, Placarded for Non-Drinking Use
WSB-0381	Kitchen 517	1000	Kitchen Faucet (Cold)	Potable	6/12/2024	1.8			Result Below Action Level Continue O&M
WSB-0382	Kitchen 517	1000	Kitchen Faucet (Cold)	Potable	6/12/2024	2.1			Result Below Action Level Continue O&M
WSB-0383	Kitchen 517	1000	Spray Nozzle	Potable	6/12/2024	<1.00 ND			Result Below Action Level Continue O&M
WSB-0385	Gym 526 Gym Office 524 Bathroom	1003C1	Bathroom Faucet	Non-Applicable					Placarded for Non-Drinking Use
WSB-0387	Room 533 Storage Room Office Bathroom	1017B1	Bathroom Faucet	Non-Applicable					Placarded for Non-Drinking Use
WSB-0388	Fan Room	1020A	Hose Bib	Non-Applicable					Placarded for Non-Drinking Use
WSB-0389	Room 563 Nurse	1015	Tempered Water Outlet	Non-Applicable					Placarded for Non-Drinking Use
WSB-0390	Room 563 Nurse	1015	Nurse's Office Sink	Potable	6/12/2024	2.9			Result Below Action Level Continue O&M
WSB-0391	Room 563 Nurse Bathroom	1015A	Bathroom Faucet	Non-Applicable					Placarded for Non-Drinking Use

James E. Allen Junior-Senior High School

Outlet Number	Room Name	Space ID	Outlet Type	Potable/ Applicable/ RFI	Initial Sample Date	Initial Result (ppb)	Post Remediation Sample Date	Post Remediation Result (ppb)	Remediation Actions/Current Status
WSB-0393	Room 566	1013	Ice Machine	Non-Applicable	6/12/2024				Further Investigation Determined Outlet Function as Non-Applicable, Placarded for Non-Drinking Use
WSB-0395	Room 566 Bathroom	1013A	Bathroom Faucet	Non-Applicable					Placarded for Non-Drinking Use
WSB-0396	Room 143	1102	Classroom Faucet	Non-Applicable	3/4/2023	<3.0 ND			Placarded for Non-Drinking Use
WSB-0397	Restroom Room 144	1101	Bathroom Faucet	Non-Applicable					Placarded for Non-Drinking Use
WSB-0398	Restroom Room 145	1100	Bathroom Faucet	Non-Applicable					Placarded for Non-Drinking Use
WSB-0399	Room 403 Storage	1023	Classroom Faucet	Non-Applicable					Placarded for Non-Drinking Use
WSB-0400	Room 404	1024	Classroom Faucet	Non-Applicable					Placarded for Non-Drinking Use
WSB-0401	Room 406	1026	Classroom Faucet	Non-Applicable					Placarded for Non-Drinking Use
WSB-0402	Room 407	1027	Classroom Faucet	Non-Applicable					Placarded for Non-Drinking Use
WSB-0403	Room 408	1028	Classroom Faucet	Non-Applicable					Placarded for Non-Drinking Use
WSB-0404	Room 409	1029	Classroom Faucet	Non-Applicable					Placarded for Non-Drinking Use
WSB-0405	Room 410	1030	Classroom Faucet	Non-Applicable					Placarded for Non-Drinking Use
WSB-0407	Boys Bathroom	1031	Bathroom Faucet	Non-Applicable					Placarded for Non-Drinking Use
WSB-0408	Girls Bathroom	1032	Bathroom Faucet	Non-Applicable					Placarded for Non-Drinking Use
WSB-0409	Girls Bathroom	1032	Hose Bib	Non-Applicable					Placarded for Non-Drinking Use
WSB-0410	Custodian Closet 413	1033	Slop Sink	Non-Applicable					Placarded for Non-Drinking Use
WSB-0411	Room 419	1034	Classroom Faucet	Non-Applicable					Placarded for Non-Drinking Use
WSB-0412	Room 421	1035	Classroom Faucet	Non-Applicable					Placarded for Non-Drinking Use
WSB-0414	Room 422 (Interior Wall Removed)	1036	Classroom Faucet	Non-Applicable					Placarded for Non-Drinking Use
WSB-0415	Room 423 (Interior Wall Removed)	1037	Classroom Faucet	Non-Applicable					Placarded for Non-Drinking Use

James E. Allen Junior-Senior High School

Outlet Number	Room Name	Space ID	Outlet Type	Potable/ Applicable/ RFI	Initial Sample Date	Initial Result (ppb)	Post Remediation Sample Date	Post Remediation Result (ppb)	Remediation Actions/Current Status
WSB-0416	Room 424	1038	Classroom Faucet	Non-Applicable					Placarded for Non-Drinking Use
WSB-0417	Main Office Principals Office Bathroom	1099A1	Bathroom Faucet	Non-Applicable					Placarded for Non-Drinking Use
WSB-0418	Room 202/203	1042	Office Faucet	Non-Applicable					Placarded for Non-Drinking Use
WSB-0419	Room 202/203	1042	Office Faucet	Non-Applicable					Placarded for Non-Drinking Use
WSB-0420	Room 204 (Interior Wall Removed)	1043	Classroom Faucet	Non-Applicable					Placarded for Non-Drinking Use
WSB-0421	Room 206	1045	Classroom Faucet	Non-Applicable					Placarded for Non-Drinking Use
WSB-0422	Room 207	1046	Classroom Faucet	Non-Applicable					Placarded for Non-Drinking Use
WSB-0423	Room 208	1047	Classroom Faucet	Non-Applicable					Placarded for Non-Drinking Use
WSB-0424	Room 210 (Interior Wall Removed)	1049	Classroom Faucet	Non-Applicable					Placarded for Non-Drinking Use
WSB-0425	Room 211 (Interior Wall Removed)	1050	Classroom Faucet	Non-Applicable					Placarded for Non-Drinking Use
WSB-0426	Custodian Closet 216	1051	Slop Sink	Non-Applicable					Placarded for Non-Drinking Use
WSB-0427	Girls Bathroom	1052	Hose Bib	Non-Applicable					Placarded for Non-Drinking Use
WSB-0428	Girls Bathroom	1052	Bathroom Faucet	Non-Applicable					Placarded for Non-Drinking Use
WSB-0429	Boys Bathroom	1053	Bathroom Faucet	Non-Applicable					Placarded for Non-Drinking Use
WSB-0430	Boys Bathroom	1053	Hose Bib	Non-Applicable					Placarded for Non-Drinking Use
WSB-0431	Room 219	1054	Classroom Faucet	Non-Applicable					Placarded for Non-Drinking Use
WSB-0432	Room 220	1055	Classroom Faucet	Non-Applicable					Placarded for Non-Drinking Use
WSB-0433	Room 221	1056	Classroom Faucet	Non-Applicable					Placarded for Non-Drinking Use
WSB-0434	Room 221	1056	Hose Bib	Non-Applicable					Placarded for Non-Drinking Use
WSB-0435	Room 223	1057	Classroom Faucet	Non-Applicable					Placarded for Non-Drinking Use

James E. Allen Junior-Senior High School

Outlet Number	Room Name	Space ID	Outlet Type	Potable/ Applicable/ RFI	Initial Sample Date	Initial Result (ppb)	Post Remediation Sample Date	Post Remediation Result (ppb)	Remediation Actions/Current Status
WSB-0436	Room 224	1058	Classroom Faucet	Non-Applicable					Placarded for Non-Drinking Use
WSB-0437	Room 225	1059	Classroom Faucet	Non-Applicable					Placarded for Non-Drinking Use
WSB-0438	Room 227	1060	Classroom Faucet	Non-Applicable					Placarded for Non-Drinking Use
WSB-0439	Room 228 Storage	1061	Slop Sink	Non-Applicable					Placarded for Non-Drinking Use
WSB-0440	Room 110	1093	Classroom Faucet	Non-Applicable					Placarded for Non-Drinking Use
WSB-0441	Room 110	1093	Spray Nozzle	Non-Applicable					Placarded for Non-Drinking Use
WSB-0442	Room 114 (Renovated)	1067	Hand Wash Only	Non-Applicable					Placarded for Non-Drinking Use
WSB-0443	Room 114 (Renovated)	1067	Spray Nozzle	Non-Applicable					Placarded for Non-Drinking Use
WSB-0444	Wood Shop Room 117	1068	Classroom Faucet	Non-Applicable					Placarded for Non-Drinking Use
WSB-0445	Wood Shop Room 117	1068	Spray Nozzle	Non-Applicable					Placarded for Non-Drinking Use
WSB-0446	Custodial Office Room 126 Bathroom Room 127	1064A	Bathroom Faucet	Non-Applicable					Placarded for Non-Drinking Use
WSB-0447	Custodial Office Room 126 Bathroom Room 128	1064B	Bathroom Faucet	Non-Applicable					Placarded for Non-Drinking Use
WSB-0448	Custodial Office Room 126 Bathroom Room 128	1064B	Slop Sink	Non-Applicable					Placarded for Non-Drinking Use
WSB-0449	Room 121	1090	Classroom Faucet	Non-Applicable					Placarded for Non-Drinking Use
WSB-0450	Staff Restroom Room 133	1089	Bathroom Faucet	Non-Applicable					Placarded for Non-Drinking Use
WSB-0451	Staff Restroom Room 134	1088	Bathroom Faucet	Non-Applicable					Placarded for Non-Drinking Use
WSB-0452	Storage Room 303	1070	Slop Sink	Non-Applicable					Placarded for Non-Drinking Use
WSB-0453	Room 304	1071	Classroom Faucet	Non-Applicable					Placarded for Non-Drinking Use
WSB-0454	Room 305	1072	Classroom Faucet	Non-Applicable					Placarded for Non-Drinking Use
WSB-0455	Room 306	1073	Classroom Faucet	Non-Applicable					Placarded for Non-Drinking Use

James E. Allen Junior-Senior High School

Outlet Number	Room Name	Space ID	Outlet Type	Potable/ Applicable/ RFI	Initial Sample Date	Initial Result (ppb)	Post Remediation Sample Date	Post Remediation Result (ppb)	Remediation Actions/Current Status
WSB-0459	600 Wing, Faculty Bathroom	1107	Bathroom Faucet	Non-Applicable					Placarded for Non-Drinking Use
WSB-0460	600 Wing, Custodial Closet	1108	Slop Sink	Non-Applicable					Placarded for Non-Drinking Use
WSB-0462	600 Wing, Boys Bathroom	1111	Bathroom Faucet	Non-Applicable					Placarded for Non-Drinking Use
WSB-0463	600 Wing, Main Corridor	1109	Water Cooler	Potable	6/12/2024	<1.00 ND			Result Below Action Level Continue O&M
WSB-0464	600 Wing, Main Corridor	1109	Water Cooler	Potable	6/12/2024	<1.00 ND			Result Below Action Level Continue O&M
WSB-0467	Boys Bathroom	1077	Bathroom Faucet	Non-Applicable					Placarded for Non-Drinking Use
WSB-0468	Girls Bathroom	1078	Hose Bib	Non-Applicable					Placarded for Non-Drinking Use
WSB-0469	Girls Bathroom	1078	Bathroom Faucet	Non-Applicable					Placarded for Non-Drinking Use
WSB-0470	Custodian Closet 313	1079	Slop Sink	Non-Applicable					Placarded for Non-Drinking Use
WSB-0471	Room 320	1080	Classroom Faucet	Non-Applicable					Placarded for Non-Drinking Use
WSB-0472	Room 321	1081	Classroom Faucet	Non-Applicable					Placarded for Non-Drinking Use
WSB-0473	Room 322	1082	Classroom Faucet	Non-Applicable	3/4/2023	1.2 J			Placarded for Non-Drinking Use
WSB-0475	Room 324	1084	Classroom Faucet	Non-Applicable					Placarded for Non-Drinking Use
WSB-0476	Room 325	1085	Classroom Faucet	Non-Applicable					Placarded for Non-Drinking Use
WSB-0477	Room 326	1086	Classroom Faucet	Non-Applicable					Placarded for Non-Drinking Use
WSB-0478	Room 327	1086	Classroom Faucet	Non-Applicable					Placarded for Non-Drinking Use
WSB-0480	Restroom Room 137	1105	Bathroom Faucet	Non-Applicable					Placarded for Non-Drinking Use
WSB-0481	Custodial Closet	1104	Slop Sink	Non-Applicable					Placarded for Non-Drinking Use
WSB-0482	Restroom Room 138	1103	Bathroom Faucet	Non-Applicable					Placarded for Non-Drinking Use
WSB-0483	Restroom Room 138	1103	Hose Bib	Non-Applicable					Placarded for Non-Drinking Use

James E. Allen Junior-Senior High School

Outlet Number	Room Name	Space ID	Outlet Type	Potable/ Applicable/ RFI	Initial Sample Date	Initial Result (ppb)	Post Remediation Sample Date	Post Remediation Result (ppb)	Remediation Actions/Current Status
WSB-0484	Restroom Room 108	1095	Bathroom Faucet	Non-Applicable					Placarded for Non-Drinking Use
WSB-0485	Restroom Room 109	1094	Bathroom Faucet	Non-Applicable					Placarded for Non-Drinking Use
WSB-0486		Exterior(Garth)	Hose Bib	Non-Applicable					Placarded for Non-Drinking Use
WSB-0488		Exterior(Garth)	Hose Bib	Non-Applicable					Placarded for Non-Drinking Use
WSB-0490		Exterior(Garth)	Hose Bib	Non-Applicable					Placarded for Non-Drinking Use
WSB-0491	Rooms 135 & 136	1106	Office Faucet	Non-Applicable					Placarded for Non-Drinking Use
WSB-0493		Exterior	Hose Bib	Non-Applicable					Placarded for Non-Drinking Use
WSB-0494	Boiler Room Room 125	1065	Hose Bib	Non-Applicable					Placarded for Non-Drinking Use
WSB-0849	200 Wing Main Area	1063	Bubbler	Potable	6/12/2024	OOS			Testing Required Before Return to Service
WSB-0850	200 Wing Main Area	1063	Bottle Fill Station	Potable	6/12/2024	<1.00 ND			Result Below Action Level Continue O&M
WSB-0851	Main Lobby And 400 Wing Corridor	1041	Bubbler	Potable	6/12/2024	OOS			Testing Required Before Return to Service
WSB-0852	Main Lobby And 400 Wing Corridor	1041	Bottle Fill Station	Potable	6/12/2024	<1.00 ND			Result Below Action Level Continue O&M
WSB-0860	600 Wing, Main Corridor	1109	Bottle Fill Station	Potable	6/12/2024	<1.00 ND			Result Below Action Level Continue O&M
WSB-0965	Room 508 (ERL)	1005	Dish Washer	Non-Applicable					Placarded for Non-Drinking Use
WSB-0966	500 Wing Corridor	1021	Bottle Fill Station	Potable	6/12/2024	<1.00 ND			Result Below Action Level Continue O&M
WSB-0967	500 Wing Corridor	1021	Water Cooler	Potable	6/12/2024	<1.00 ND			Result Below Action Level Continue O&M
WSB-0968	Room 533 Closet	1017A	Slop Sink	Non-Applicable					Placarded for Non-Drinking Use
WSB-0969	500 Wing Corridor	1021	Bottle Fill Station	Potable	6/12/2024	<1.00 ND			Result Below Action Level Continue O&M
WSB-0970	500 Wing Corridor	1021	Bubbler	Potable	6/12/2024	OOS			Testing Required Before Return to Service
WSB-0971	Room 566	1013	Washing Machine	Non-Applicable					Placarded for Non-Drinking Use

James E. Allen Junior-Senior High School

Outlet Number	Room Name	Space ID	Outlet Type	Potable/ Applicable/ RFI	Initial Sample Date	Initial Result (ppb)	Post Remediation Sample Date	Post Remediation Result (ppb)	Remediation Actions/Current Status
WSB-0972	Room 566	1013	Home Economics Faucet (Cold)	Potable	6/12/2024	1.0			Result Below Action Level Continue O&M
WSB-0973	Room 566	1013	Dish Washer	Non-Applicable					Placarded for Non-Drinking Use
WSB-0974	Room 405	1025	Classroom Faucet	Non-Applicable					Placarded for Non-Drinking Use
WSB-0975	Room 421	1035	Classroom Faucet	Non-Applicable					Placarded for Non-Drinking Use
WSB-0976	Room 209	1048	Classroom Faucet	Non-Applicable					Placarded for Non-Drinking Use
WSB-0977	Room 307/308	1074	Classroom Faucet	Non-Applicable					Placarded for Non-Drinking Use
WSB-0978	Room 307/308	1074	Classroom Faucet	Non-Applicable					Placarded for Non-Drinking Use
WSB-0979	Room 309	1075	Classroom Faucet	Non-Applicable					Placarded for Non-Drinking Use
WSB-0980	600 Wing, Girls Bathroom	1110	Bathroom Faucet	Non-Applicable					Placarded for Non-Drinking Use
WSB-0981	300 Wing Main Area	1087	Bottle Fill Station	Potable	6/12/2024	<1.00 ND			Result Below Action Level Continue O&M
WSB-0982	300 Wing Main Area	1087	Bubbler	Potable	6/12/2024	OOS			Testing Required Before Return to Service
WSB-0983	Boys Bathroom	1077	Hose Bib	Non-Applicable					Placarded for Non-Drinking Use
WSB-0984	Room 323	1083	Classroom Faucet	Non-Applicable					Placarded for Non-Drinking Use
WSB-0985	Main Lobby & 100 Wing Common Area	1107	Bottle Fill Station	Potable	6/12/2024	<1.00 ND			Result Below Action Level Continue O&M
WSB-0986	Main Lobby & 100 Wing Common Area	1107	Water Cooler	Potable	6/12/2024	<1.00 ND			Result Below Action Level Continue O&M
WSB-0987		Exterior (Garth)	Hose Bib	Non-Applicable					Placarded for Non-Drinking Use
WSB-0988		Exterior (Garth)	Hose Bib	Non-Applicable					Placarded for Non-Drinking Use
WSB-0989		Exterior	Hose Bib	Non-Applicable					Placarded for Non-Drinking Use
WSB-0990		Exterior	Hose Bib	Non-Applicable					Placarded for Non-Drinking Use

Administration Building

Outlet Number	Room Name	Space ID	Outlet Type	Potable/ Applicable/ RFI	Initial Sample Date	Initial Result (ppb)	Post Remediation Sample Date	Post Remediation Result (ppb)	Remediation Actions/Current Status
WSB-0495	Large Conference Room	1024	Kitchen Faucet (Cold)	Potable	6/18/2024	3.7			Result Below Action Level Continue O&M
WSB-0496	Large Conference Room	1024	Spray Nozzle	Potable	6/18/2024	1.1			Result Below Action Level Continue O&M
WSB-0497	Men's Bathroom	1023	Bathroom Faucet	Non-Applicable					Placarded for Non-Drinking Use
WSB-0498	Men's Bathroom	1023	Bathroom Faucet	Non-Applicable					Placarded for Non-Drinking Use
WSB-0499	Women's Bathroom	1020	Bathroom Faucet	Non-Applicable					Placarded for Non-Drinking Use
WSB-0500	Women's Bathroom	1020	Bathroom Faucet	Non-Applicable					Placarded for Non-Drinking Use
WSB-0502	Room L8 Staff Lounge	1016	Kitchen Faucet (Cold)	Potable	6/18/2024	<1.00 ND			Result Below Action Level Continue O&M
WSB-0503	Corridor From L9 To L11	1022	Water Cooler	Potable	6/18/2024	<1.00 ND			Result Below Action Level Continue O&M
WSB-0505	Men's Bathroom	1004	Bathroom Faucet	Non-Applicable					Placarded for Non-Drinking Use
WSB-0506	Women's Bathroom	1005	Bathroom Faucet	Non-Applicable					Placarded for Non-Drinking Use
WSB-0507	Custodial Closet	2009	Slop Sink	Non-Applicable					Placarded for Non-Drinking Use
WSB-0508	Custodial Closet	2009	Slop Sink	Non-Applicable					Placarded for Non-Drinking Use
WSB-0509	South West Office Bathroom	2010B	Bathroom Faucet	Non-Applicable					Placarded for Non-Drinking Use
WSB-0510	Bathroom Adjacent 201	3007	Bathroom Faucet	Non-Applicable					Placarded for Non-Drinking Use
WSB-0511	Open Storage Area	3002	Water Cooler	Potable	6/18/2024	<1.00 ND			Result Below Action Level Continue O&M
WSB-0512	Room 110 Custodian	2017	Slop Sink	Non-Applicable					Placarded for Non-Drinking Use
WSB-0514	Women's Bathroom	2018	Bathroom Faucet	Non-Applicable					Placarded for Non-Drinking Use
WSB-0515	Kitchen	4000A	Kitchen Faucet (Cold)	Potable	3/4/2023	<3.0 ND			Result Below Action Level Continue O&M
WSB-0517	Mens Bathroom	4000D	Bathroom Faucet	Non-Applicable					Placarded for Non-Drinking Use
WSB-0518	Mens Bathroom	4000D	Bathroom Faucet	Non-Applicable					Placarded for Non-Drinking Use

Administration Building

Outlet Number	Room Name	Space ID	Outlet Type	Potable/ Applicable/ RFI	Initial Sample Date	Initial Result (ppb)	Post Remediation Sample Date	Post Remediation Result (ppb)	Remediation Actions/Current Status
WSB-0519	Womens Bathroom	4000B	Bathroom Faucet	Non-Applicable					Placarded for Non-Drinking Use
WSB-0520	Womens Bathroom	4000B	Bathroom Faucet	Non-Applicable					Placarded for Non-Drinking Use
WSB-0524		EX	Hose Bib	Non-Applicable					Placarded for Non-Drinking Use
WSB-0525		EX	Hose Bib	Non-Applicable					Placarded for Non-Drinking Use
WSB-0957	Custodial Closet	1018	Slop Sink	Non-Applicable					Placarded for Non-Drinking Use
WSB-0958	Corridor Outside Women's Bathroom	2025	Bottle Fill Station	Potable	6/18/2024	<1.00 ND			Result Below Action Level Continue O&M
WSB-0959	Corridor Outside Women's Bathroom	2025	Water Cooler	Potable	6/18/2024	<1.00 ND			Result Below Action Level Continue O&M
WSB-0960	New Construction Corridor	4000J	Bottle Fill Station	Potable	6/18/2024	<1.00 ND			Result Below Action Level Continue O&M
WSB-0961	New Construction Corridor	4000J	Water Cooler	Potable	6/18/2024	<1.00 ND			Result Below Action Level Continue O&M
WSB-0962	New Construction Corridor	4000J	Water Cooler	Potable	6/18/2024	<1.00 ND			Result Below Action Level Continue O&M
WSB-0963	Custodial Closet	4000C	Slop Sink	Non-Applicable					Placarded for Non-Drinking Use
WSB-0964		EX	Hose Bib	Non-Applicable					Placarded for Non-Drinking Use

Jones Hall II

Outlet Number	Room Name	Space ID	Outlet Type	Potable/ Applicable/ RFI	Initial Sample Date	Initial Result (ppb)	Post Remediation Sample Date	Post Remediation Result (ppb)	Remediation Actions/Current Status
WSB-0527	E1	1000	Classroom Faucet	Non-Applicable					Placarded for Non-Drinking Use
WSB-0528	E1	1000	Spray Nozzle	Non-Applicable					Placarded for Non-Drinking Use
WSB-0529	E1 Bathroom	1000B	Tempered Water Outlet	Non-Applicable					Placarded for Non-Drinking Use
WSB-0530	E1 Bathroom	1000B	Hose Bib	Non-Applicable					Placarded for Non-Drinking Use
WSB-0531	Dark Room	1000C	Hose Bib	Non-Applicable					Placarded for Non-Drinking Use
WSB-0532	E2 Staff Bathroom	1001D	Tempered Water Outlet	Non-Applicable					Placarded for Non-Drinking Use
WSB-0533	E2 Staff Bathroom	1001D	Hose Bib	Non-Applicable					Placarded for Non-Drinking Use
WSB-0534	E2	1001	Water Cooler	RFI	6/6/2024	88.7			Outlet Replaced by Sticker No. 1071 & 1072
WSB-0535	E2 Bathroom	1001C	Tempered Water Outlet	Non-Applicable					Placarded for Non-Drinking Use
WSB-0536	E2 Bathroom	1001C	Hose Bib	Non-Applicable					Placarded for Non-Drinking Use
WSB-0538	E4 Boys Bathroom (Left)	1003C	Tempered Water Outlet	Non-Applicable					Placarded for Non-Drinking Use
WSB-0539	E4 Boys Bathroom (Left)	1003C	Hose Bib	Non-Applicable					Placarded for Non-Drinking Use
WSB-0540	E4 Girls Bathroom	1003D	Tempered Water Outlet	Non-Applicable					Placarded for Non-Drinking Use
WSB-0541	E4 Girls Bathroom	1003D	Hose Bib	Non-Applicable					Placarded for Non-Drinking Use
WSB-0542		Exterior	Hose Bib	Non-Applicable					Placarded for Non-Drinking Use
WSB-0949	E1 Custodial Closet	1000A	Slop Sink	Non-Applicable					Placarded for Non-Drinking Use
WSB-0950	Dark Room	1000C	Eye Wash	Non-Applicable					Placarded for Non-Drinking Use
WSB-0951	E4	1003	Bottle Fill Station	Potable	6/6/2024	<1.00 ND			Result Below Action Level Continue O&M
WSB-0952	E4	1003	Water Cooler	Potable	6/6/2024	<1.00 ND			Result Below Action Level Continue O&M
WSB-0953	Receiving Buiding	N/A	Kitchen Faucet (Cold)	Potable	6/6/2024	1.4			Result Below Action Level Continue O&M

Jones Hall II

Outlet Number	Room Name	Space ID	Outlet Type	Potable/ Applicable/ RFI	Initial Sample Date	Initial Result (ppb)	Post Remediation Sample Date	Post Remediation Result (ppb)	Remediation Actions/Current Status
WSB-0954	Receiving Building Bathroom	N/A	Bathroom Faucet	Non-Applicable					Placarded for Non-Drinking Use
WSB-0955	Receiving Building Exterior	Exterior	Hose Bib	Non-Applicable					Placarded for Non-Drinking Use
WSB-0956	Receiving Buidling Exterior	Exterior	Hose Bib	Non-Applicable					Placarded for Non-Drinking Use
WSB-1071	E2	1001	Bottle Fill Station	Potable	8/9/2024	<1.0			Result Below Action Level Continue O&M
WSB-1072	E2	1001	Water Cooler	Potable	8/9/2024	<1.0			Result Below Action Level Continue O&M

Jones Hall I

Outlet Number	Room Name	Space ID	Outlet Type	Potable/ Applicable/ RFI	Initial Sample Date	Initial Result (ppb)	Post Remediation Sample Date	Post Remediation Result (ppb)	Remediation Actions/Current Status
WSB-0543	D6 Closet	1000A	Slop Sink	Non-Applicable					Placarded for Non-Drinking Use
WSB-0545	D6 Bathroom	1000B	Hose Bib	Non-Applicable					Placarded for Non-Drinking Use
WSB-0546	D6	1000	Water Cooler	Non-Potable	6/6/2024	1.1			Result Below Action Level Continue O&M
WSB-0547	D5 Closet/Storage	1001C	Slop Sink	Non-Applicable					Placarded for Non-Drinking Use
WSB-0548	D5 Bathroom	1001B	Tempered Water Outlet	Non-Applicable					Placarded for Non-Drinking Use
WSB-0549	D5 Bathroom	1001B	Hose Bib	Non-Applicable					Placarded for Non-Drinking Use
WSB-0550	D4 Closet	1002A	Slop Sink	Non-Applicable					Placarded for Non-Drinking Use
WSB-0551	D4 Bathroom	1002B	Tempered Water Outlet	Non-Applicable					Placarded for Non-Drinking Use
WSB-0552	D4 Bathroom	1002B	Hose Bib	Non-Applicable					Placarded for Non-Drinking Use
WSB-0553	D4	1002	Water Cooler	Potable	6/6/2024	<1.00 ND			Result Below Action Level Continue O&M
WSB-0554	Staff Bathroom	1006B	Tempered Water Outlet	Non-Applicable					Placarded for Non-Drinking Use
WSB-0555	Staff Bathroom	1006B	Hose Bib	Non-Applicable					Placarded for Non-Drinking Use
WSB-0557	D2	1003	Classroom Faucet	Non-Applicable					Placarded for Non-Drinking Use
WSB-0558	D2	1003	Classroom Faucet	Non-Applicable					Placarded for Non-Drinking Use
WSB-0559	D2	1003	Hose Bib	Non-Applicable					Placarded for Non-Drinking Use
WSB-0564	Carpentry D1	1004	Water Cooler	Potable	6/6/2024	<1.00 ND			Result Below Action Level Continue O&M
WSB-0566		Exterior	Hose Bib	Non-Applicable					Placarded for Non-Drinking Use
WSB-0567		Exterior	Hose Bib	Non-Applicable					Placarded for Non-Drinking Use
WSB-0887	D2	1003	Water Cooler	Potable	6/6/2024	<1.00 ND			Result Below Action Level Continue O&M
WSB-0942	D6 Bathroom	1000B	Tempered Water Outlet	Non-Applicable					Placarded for Non-Drinking Use

Jones Hall I

Outlet Number	Room Name	Space ID	Outlet Type	Potable/ Applicable/ RFI	Initial Sample Date	Initial Result (ppb)	Post Remediation Sample Date	Post Remediation Result (ppb)	Remediation Actions/Current Status
WSB-0943	D2 Bathroom	1003C	Tempered Water Outlet	Non-Applicable					Placarded for Non-Drinking Use
WSB-0944	D2 Custodian Closet	1003B	Slop Sink	Non-Applicable					Placarded for Non-Drinking Use
WSB-0945	Carpentry D1 Bathroom	1004B	Tempered Water Outlet	Non-Applicable					Placarded for Non-Drinking Use
WSB-0946	Carpentry D1 Custodian Closet	1004A	Slop Sink	Non-Applicable					Placarded for Non-Drinking Use
WSB-0947	Carpentry D1	1004	Eye Wash	Non-Applicable					Placarded for Non-Drinking Use
WSB-0948	Exterior	Exterior	Hose Bib	Non-Applicable					Placarded for Non-Drinking Use

McGuire Hall I

Outlet Number	Room Name	Space ID	Outlet Type	Potable/ Applicable/ RFI	Initial Sample Date	Initial Result (ppb)	Post Remediation Sample Date	Post Remediation Result (ppb)	Remediation Actions/Current Status
WSB-0568	Boys Bathroom	1003	Tempered Water Outlet	Non-Applicable					Placarded for Non-Drinking Use
WSB-0569	Boys Bathroom	1003	Hose Bib	Non-Applicable					Placarded for Non-Drinking Use
WSB-0571	Custodial Closet	1002	Slop Sink	Non-Applicable					Placarded for Non-Drinking Use
WSB-0572	Girls Bathroom	1001	Tempered Water Outlet	Non-Applicable					Placarded for Non-Drinking Use
WSB-0574	Girls Bathroom	1001	Tempered Water Outlet	Non-Applicable					Placarded for Non-Drinking Use
WSB-0575	Girls Bathroom	1001	Hose Bib	Non-Applicable					Placarded for Non-Drinking Use
WSB-0576	Fan Room	1017	Slop Sink	Non-Applicable					Placarded for Non-Drinking Use
WSB-0577	Room 206	2021	Classroom Faucet	Non-Applicable					Placarded for Non-Drinking Use
WSB-0579	Room 203	2017	Classroom Faucet	Non-Applicable					Placarded for Non-Drinking Use
WSB-0580	Room 209 Bathroom	2016A	Tempered Water Outlet	Non-Applicable					Placarded for Non-Drinking Use
WSB-0581	Room 209 Bathroom	2016A	Hose Bib	Non-Applicable					Placarded for Non-Drinking Use
WSB-0582	Room 204	2015	Science Faucet	Non-Applicable					Placarded for Non-Drinking Use
WSB-0583	Room 204	2015	Science Faucet	Non-Applicable					Placarded for Non-Drinking Use
WSB-0584	Room 204	2015	Science Faucet	Non-Applicable					Placarded for Non-Drinking Use
WSB-0585	Room 204	2015	Science Faucet	Non-Applicable					Placarded for Non-Drinking Use
WSB-0586	Room 204	2015	Science Faucet	Non-Applicable					Placarded for Non-Drinking Use
WSB-0587	Room 204	2015	Science Faucet	Non-Applicable					Placarded for Non-Drinking Use
WSB-0588	Room 204	2015	Science Faucet	Non-Applicable					Placarded for Non-Drinking Use
WSB-0589	Room 204	2015	Science Faucet	Non-Applicable					Placarded for Non-Drinking Use
WSB-0590	Room 204	2015	Science Faucet	Non-Applicable					Placarded for Non-Drinking Use

McGuire Hall I

Outlet Number	Room Name	Space ID	Outlet Type	Potable/ Applicable/ RFI	Initial Sample Date	Initial Result (ppb)	Post Remediation Sample Date	Post Remediation Result (ppb)	Remediation Actions/Current Status
WSB-0592	Custodial Closet	2014	Slop Sink	Non-Applicable					Placarded for Non-Drinking Use
WSB-0593	Girls Bathroom	2013	Tempered Water Outlet	Non-Applicable					Placarded for Non-Drinking Use
WSB-0594	Girls Bathroom	2013	Tempered Water Outlet	Non-Applicable					Placarded for Non-Drinking Use
WSB-0595	Girls Bathroom	2013	Tempered Water Outlet	Non-Applicable					Placarded for Non-Drinking Use
WSB-0596	Girls Bathroom	2013	Hose Bib	Non-Applicable					Placarded for Non-Drinking Use
WSB-0597	Room 205	2012	Classroom Faucet	Non-Applicable					Placarded for Non-Drinking Use
WSB-0598	Custodial Closet	2010	Slop Sink	Non-Applicable					Placarded for Non-Drinking Use
WSB-0599	Men's Bathroom (Renovated)	2001	Tempered Water Outlet	Non-Applicable					Placarded for Non-Drinking Use
WSB-0600	Men's Bathroom (Renovated)	2001	Tempered Water Outlet	Non-Applicable					Placarded for Non-Drinking Use
WSB-0601	Corridor Rooms 224 To 227	2009	Water Cooler	Potable	6/6/2024	1.5			Result Below Action Level Continue O&M
WSB-0602	Room 220 Bathroom	2002A	Tempered Water Outlet	Non-Applicable					Placarded for Non-Drinking Use
WSB-0603	Room 220 Bathroom	2002A	Hose Bib	Non-Applicable					Placarded for Non-Drinking Use
WSB-0606	Lab 1	1019	Hair Wash Station	Non-Applicable					Placarded for Non-Drinking Use
WSB-0607	Women's Bathroom	1021	Tempered Water Outlet	Non-Applicable					Placarded for Non-Drinking Use
WSB-0608	Women's Bathroom	1021	Tempered Water Outlet	Non-Applicable					Placarded for Non-Drinking Use
WSB-0609	Cosmetic Lab Corridor	1027	Water Cooler	Potable	6/6/2024	<1.00 ND			Result Below Action Level Continue O&M
WSB-0611	Lab Room 2	1020	Hair Wash Station	Non-Applicable					Placarded for Non-Drinking Use
WSB-0612	Lab Room 2	1020	Hair Wash Station	Non-Applicable					Placarded for Non-Drinking Use
WSB-0613	Lab Room 2	1020	Hair Wash Station	Non-Applicable					Placarded for Non-Drinking Use
WSB-0614	Room 25 Supply Storage Bathroom	1022A	Tempered Water Outlet	Non-Applicable					Placarded for Non-Drinking Use

McGuire Hall I

Outlet Number	Room Name	Space ID	Outlet Type	Potable/ Applicable/ RFI	Initial Sample Date	Initial Result (ppb)	Post Remediation Sample Date	Post Remediation Result (ppb)	Remediation Actions/Current Status
WSB-0615	Room 25 Supply Storage Bathroom	1022A	Hose Bib	Non-Applicable					Placarded for Non-Drinking Use
WSB-0617	Lab 3	1024	Hair Wash Station	Non-Applicable					Placarded for Non-Drinking Use
WSB-0618	Lab 3	1024	Hair Wash Station	Non-Applicable					Placarded for Non-Drinking Use
WSB-0619	Lab 3	1024	Hair Wash Station	Non-Applicable					Placarded for Non-Drinking Use
WSB-0620	Lab 3	1024	Washing Machine	Non-Applicable					Placarded for Non-Drinking Use
WSB-0621	Lab Room 4	1026	Hair Wash Station	Non-Applicable					Placarded for Non-Drinking Use
WSB-0622	Lab Room 4	1026	Hair Wash Station	Non-Applicable					Placarded for Non-Drinking Use
WSB-0625	Women's Bathroom	1029	Tempered Water Outlet	Non-Applicable					Placarded for Non-Drinking Use
WSB-0626	Women's Bathroom	1029	Tempered Water Outlet	Non-Applicable					Placarded for Non-Drinking Use
WSB-0628	Vending Area Men's Bathroom	1031A1	Tempered Water Outlet	Non-Applicable					Placarded for Non-Drinking Use
WSB-0629	Room 45 Lunch Room	1031C	Kitchen Faucet (Cold)	Potable	6/6/2024	<1.00 ND			Result Below Action Level Continue O&M
WSB-0630	Automotive Shop 2	1032	Hand Wash Only	Non-Applicable					Placarded for Non-Drinking Use
WSB-0631	Automotive Shop 2	1032	Hand Wash Only	Non-Applicable					Placarded for Non-Drinking Use
WSB-0635	Paint Shop Classroom Office 1 Bathroom	1034A1	Tempered Water Outlet	Non-Applicable					Placarded for Non-Drinking Use
WSB-0636	Paint Shop Classroom Office 1 Bathroom	1034A1	Hose Bib	Non-Applicable					Placarded for Non-Drinking Use
WSB-0637	Paint Shop Classroom	1034	Hose Bib	Non-Applicable					Placarded for Non-Drinking Use
WSB-0639	Auto Body Shop Bathroom	1035C	Tempered Water Outlet	Non-Applicable					Placarded for Non-Drinking Use
WSB-0640	Auto Body Shop Bathroom	1035C	Hose Bib	Non-Applicable					Placarded for Non-Drinking Use
WSB-0641	Auto Body Shop	1035	Hand Wash Only	Non-Applicable					Placarded for Non-Drinking Use
WSB-0642	Auto Body Shop	1035	Water Cooler	Potable	6/6/2024	<1.00 ND			Result Below Action Level Continue O&M

McGuire Hall I

Outlet Number	Room Name	Space ID	Outlet Type	Potable/ Applicable/ RFI	Initial Sample Date	Initial Result (ppb)	Post Remediation Sample Date	Post Remediation Result (ppb)	Remediation Actions/Current Status
WSB-0644	Spray Paint Shop	1037	Hose Bib	Non-Applicable					Placarded for Non-Drinking Use
WSB-0645	Welding Shop	1038	Bubbler	Potable	6/6/2024	OOS			Testing Required Before Return to Service
WSB-0648	Welding Bathroom	1038D	Hose Bib	Non-Applicable					Placarded for Non-Drinking Use
WSB-0649	Welding Office Bathroom	1038C2	Tempered Water Outlet	Non-Applicable					Placarded for Non-Drinking Use
WSB-0650	Welding Office Bathroom	1038C2	Hose Bib	Non-Applicable					Placarded for Non-Drinking Use
WSB-0651	Auto Mechanic Shop 1	1040	Water Cooler	Potable	6/6/2024	<1.00 ND			Result Below Action Level Continue O&M
WSB-0652	Auto Mechanic Shop 1	1040	Hand Wash Only	Non-Applicable					Placarded for Non-Drinking Use
WSB-0653	Auto Mechanic Shop 1	1040	Hose Bib	Non-Applicable					Placarded for Non-Drinking Use
WSB-0654		Exterior	Hose Bib	Non-Applicable					Placarded for Non-Drinking Use
WSB-0656		Exterior	Hose Bib	Non-Applicable					Placarded for Non-Drinking Use
WSB-0867	Corridor Rooms 8 To 16	1011	Water Cooler	Potable	6/6/2024	<1.00 ND			Result Below Action Level Continue O&M
WSB-0868	Corridor Rooms 8 To 16	1011	Bottle Fill Station	Potable	6/6/2024	<1.00 ND			Result Below Action Level Continue O&M
WSB-0869	Corridor Rooms 203A To 205	2022	Water Cooler	Potable	6/6/2024	<1.00 ND			Result Below Action Level Continue O&M
WSB-0870	Corridor Rooms 203A To 205	2022	Bottle Fill Station	Potable	6/6/2024	<1.00 ND			Result Below Action Level Continue O&M
WSB-0871	Main Reception	1031	Water Cooler	Potable	6/6/2024	<1.00 ND			Result Below Action Level Continue O&M
WSB-0872	Main Reception	1031	Bottle Fill Station	Potable	6/6/2024	<1.00 ND			Result Below Action Level Continue O&M
WSB-0907	Girls Bathroom	1001	Tempered Water Outlet	Non-Applicable					Placarded for Non-Drinking Use
WSB-0908	Room 203A	2019A	Classroom Faucet	Non-Applicable					Placarded for Non-Drinking Use
WSB-0909	Lab 1	1019	Spray Nozzle	Non-Applicable					Placarded for Non-Drinking Use
WSB-0910	Lab 1	1019	Spray Nozzle	Non-Applicable					Placarded for Non-Drinking Use

McGuire Hall I

Outlet Number	Room Name	Space ID	Outlet Type	Potable/ Applicable/ RFI	Initial Sample Date	Initial Result (ppb)	Post Remediation Sample Date	Post Remediation Result (ppb)	Remediation Actions/Current Status
WSB-0911	Lab 3	1024	Spray Nozzle	Non-Applicable					Placarded for Non-Drinking Use
WSB-0912	Lab 3	1024	Washing Machine	Non-Applicable					Placarded for Non-Drinking Use
WSB-0913	Lab Room 4	1026	Spray Nozzle	Non-Applicable					Placarded for Non-Drinking Use
WSB-0914	Lab Room 4	1026	Spray Nozzle	Non-Applicable					Placarded for Non-Drinking Use
WSB-0915	Automotive Shop 2	1032	Water Cooler	Potable	6/6/2024	<1.00 ND			Result Below Action Level Continue O&M
WSB-0916	Automotive Shop 2	1032	Hose Bib	Non-Applicable					Placarded for Non-Drinking Use
WSB-0917	Automotive Shop 2 Exit Vestibule	1032	Hose Bib	Non-Applicable					Placarded for Non-Drinking Use
WSB-0918	Automotive Shop 2	1032	Hose Bib	Non-Applicable					Placarded for Non-Drinking Use
WSB-0919	Paint Shop Classroom	1034	Hose Bib	Non-Applicable					Placarded for Non-Drinking Use
WSB-0920	Custodial Closet	1034C	Slop Sink	Non-Applicable					Placarded for Non-Drinking Use
WSB-0921	Auto Body Shop Bathroom	1035C	Tempered Water Outlet	Non-Applicable					Placarded for Non-Drinking Use
WSB-0922	Auto Body Shop	1035	Eye Wash	Non-Applicable					Placarded for Non-Drinking Use
WSB-0923	Auto Body Shop	1035	Hose Bib	Non-Applicable					Placarded for Non-Drinking Use
WSB-0924	Auto Body Shop	1035	Hose Bib	Non-Applicable					Placarded for Non-Drinking Use
WSB-0925	Auto Body Shop	1035	Hose Bib	Non-Applicable					Placarded for Non-Drinking Use
WSB-0926	Welding Bathroom	1038D	Tempered Water Outlet	Non-Applicable					Placarded for Non-Drinking Use
WSB-0927	Welding Bathroom	1038D	Tempered Water Outlet	Non-Applicable					Placarded for Non-Drinking Use
WSB-0928	Garage	1038B	Hose Bib	Non-Applicable					Placarded for Non-Drinking Use
WSB-0929	Auto Mechanic Shop 1	1040	Hose Bib	Non-Applicable					Placarded for Non-Drinking Use
WSB-0930	Auto Mechanic Shop 1	1040	Hose Bib	Non-Applicable					Placarded for Non-Drinking Use

McGuire Hall I

Outlet Number	Room Name	Space ID	Outlet Type	Potable/ Applicable/ RFI	Initial Sample Date	Initial Result (ppb)	Post Remediation Sample Date	Post Remediation Result (ppb)	Remediation Actions/Current Status
WSB-0931		Exterior	Hose Bib	Non-Applicable					Placarded for Non-Drinking Use
WSB-0932		Exterior	Hose Bib	Non-Applicable					Placarded for Non-Drinking Use
WSB-0933		Exterior	Hose Bib	Non-Applicable					Placarded for Non-Drinking Use
WSB-0934		Exterior	Hose Bib	Non-Applicable					Placarded for Non-Drinking Use
WSB-0935		Exterior	Hose Bib	Non-Applicable					Placarded for Non-Drinking Use
WSB-0936		Exterior	Hose Bib	Non-Applicable					Placarded for Non-Drinking Use
WSB-0937		Exterior	Hose Bib	Non-Applicable					Placarded for Non-Drinking Use
WSB-0938		Exterior	Hose Bib	Non-Applicable					Placarded for Non-Drinking Use
WSB-0939		Exterior	Hose Bib	Non-Applicable					Placarded for Non-Drinking Use
WSB-0940		Exterior	Hose Bib	Non-Applicable					Placarded for Non-Drinking Use
WSB-0941		Exterior	Hose Bib	Non-Applicable					Placarded for Non-Drinking Use

McGuire Hall II

Outlet Number	Room Name	Space ID	Outlet Type	Potable/ Applicable/ RFI	Initial Sample Date	Initial Result (ppb)	Post Remediation Sample Date	Post Remediation Result (ppb)	Remediation Actions/Current Status
WSB-0667	Room B1	1000	Kitchen Faucet (Cold)	Potable	6/6/2024	<1.00 ND			Result Below Action Level Continue O&M
WSB-0668	Room B1	1000	Spray Nozzle	Potable	3/4/2023	<3.0 ND			Result Below Action Level Continue O&M
WSB-0670	Room B1	1002	Dish Washer	Non-Applicable					Placarded for Non-Drinking Use
WSB-0671	Room B2	1001	Classroom Faucet	Non-Applicable					Placarded for Non-Drinking Use
WSB-0672	Room B2	1001	Classroom Faucet	Non-Applicable					Placarded for Non-Drinking Use
WSB-0676	Storage Closet	1013	Bathroom Faucet	Non-Applicable					Placarded for Non-Drinking Use
WSB-0677	Storage Closet	1013	Bathroom Faucet	Non-Applicable					Placarded for Non-Drinking Use
WSB-0678	Room B4	1005	Classroom Faucet	Non-Applicable					Placarded for Non-Drinking Use
WSB-0680	Boys Bathroom	1008	Tempered Water Outlet	Non-Applicable					Placarded for Non-Drinking Use
WSB-0681	Boys Bathroom	1008	Hose Bib	Non-Applicable					Placarded for Non-Drinking Use
WSB-0682	Girls Bathroom	1014	Tempered Water Outlet	Non-Applicable					Placarded for Non-Drinking Use
WSB-0683	Girls Bathroom	1014	Hose Bib	Non-Applicable					Placarded for Non-Drinking Use
WSB-0684	Kitchen	1022	Kitchen Faucet (Cold)	Potable	6/6/2024	<1.00 ND			Result Below Action Level Continue O&M
WSB-0685	Kitchen	1022	Spray Nozzle	Non-Applicable	6/6/2024	22.9			Further Investigation Determined Outlet Function as Non-Applicable, Placarded for Non-Drinking Use
WSB-0686	Kitchen	1022	Kitchen Faucet (Cold)	Potable	6/6/2024	1.9			Result Below Action Level Continue O&M
WSB-0687	Kitchen	1022	Hand Wash Only	Non-Applicable					Placarded for Non-Drinking Use
WSB-0688	Custodial Closet	1017	Slop Sink	Non-Applicable					Placarded for Non-Drinking Use
WSB-0689	Cafeteria	1021	Water Cooler	Potable	6/6/2024	<1.00 ND			Result Below Action Level Continue O&M
WSB-0690	Women's Bathroom	1023	Tempered Water Outlet	Non-Applicable					Placarded for Non-Drinking Use
WSB-0691	Women's Bathroom	1023	Tempered Water Outlet	Non-Applicable					Placarded for Non-Drinking Use

McGuire Hall II

Outlet Number	Room Name	Space ID	Outlet Type	Potable/ Applicable/ RFI	Initial Sample Date	Initial Result (ppb)	Post Remediation Sample Date	Post Remediation Result (ppb)	Remediation Actions/Current Status
WSB-0692	Women's Bathroom	1023	Hose Bib	Non-Applicable					Placarded for Non-Drinking Use
WSB-0693	Men's Bathroom	1024	Tempered Water Outlet	Non-Applicable					Placarded for Non-Drinking Use
WSB-0694	Men's Bathroom	1024	Tempered Water Outlet	Non-Applicable					Placarded for Non-Drinking Use
WSB-0695	Men's Bathroom	1024	Hose Bib	Non-Applicable					Placarded for Non-Drinking Use
WSB-0696	Women's Bathroom (All New)	1033	Tempered Water Outlet	Non-Applicable					Placarded for Non-Drinking Use
WSB-0697	Corridor From Main Entrance To Wilsonian Room	1035	Water Cooler	Potable	6/6/2024	<1.00 ND			Result Below Action Level Continue O&M
WSB-0698	Corridor From Main Entrance To Wilsonian Room	1035	Water Cooler	Potable	6/6/2024	<1.00 ND			Result Below Action Level Continue O&M
WSB-0699	Men's Bathroom (All New Material)	1032	Tempered Water Outlet	Non-Applicable					Placarded for Non-Drinking Use
WSB-0700	Nurse	1031	Nurse's Office Sink	Potable	6/6/2024	<1.00 ND			Result Below Action Level Continue O&M
WSB-0701	Food Prep	1036	Kitchen Faucet (Cold)	Potable	6/6/2024	<1.00 ND			Result Below Action Level Continue O&M
WSB-0702	Food Prep	1036	Hand Wash Only	Non-Applicable					Placarded for Non-Drinking Use
WSB-0703	Food Prep	1036	Kitchen Faucet (Cold)	Non-Applicable					Placarded for Non-Drinking Use
WSB-0704	Food Prep	1036	Kitchen Faucet (Cold)	Non-Applicable					Placarded for Non-Drinking Use
WSB-0705	Food Prep	1036	Kitchen Faucet (Cold)	Non-Applicable					Placarded for Non-Drinking Use
WSB-0706	Food Prep	1036	Kitchen Faucet (Cold)	Non-Applicable					Placarded for Non-Drinking Use
WSB-0707	Food Prep	1036	Kitchen Faucet (Cold)	Non-Applicable					Placarded for Non-Drinking Use
WSB-0709	Food Prep Fence Closet	1036G	Hose Bib	Non-Applicable					Placarded for Non-Drinking Use
WSB-0710	Food Prep	1036	Kitchen Faucet (Cold)	Potable	6/6/2024	1.5			Result Below Action Level Continue O&M
WSB-0711	Food Prep	1036	Pasta Pot/Steam Kettle	Potable	6/6/2024	<1.00 ND			Result Below Action Level Continue O&M
WSB-0712	Food Prep	1036	Hose Bib	Non-Applicable					Placarded for Non-Drinking Use

McGuire Hall II

Outlet Number	Room Name	Space ID	Outlet Type	Potable/ Applicable/ RFI	Initial Sample Date	Initial Result (ppb)	Post Remediation Sample Date	Post Remediation Result (ppb)	Remediation Actions/Current Status
WSB-0713	Food Prep Dish Room	1036A	Hand Wash Only	Non-Applicable					Placarded for Non-Drinking Use
WSB-0714	Food Prep Dish Room	1036A	Spray Nozzle	Non-Applicable					Placarded for Non-Drinking Use
WSB-0716	Food Prep	1036	Dish Washer	Non-Applicable	6/6/2024	49.2			Further Investigation Determined Outlet Function as Non-Applicable, Placarded for Non-Drinking Use
WSB-0717	Food Prep	1036	Hand Wash Only	Non-Applicable					Placarded for Non-Drinking Use
WSB-0718	Food Prep	1036	Hand Wash Only	Non-Applicable					Placarded for Non-Drinking Use
WSB-0719	Food Prep	1036	Kitchen Faucet (Cold)	Potable	6/6/2024	1.2			Result Below Action Level Continue O&M
WSB-0720	Food Prep	1036	Kitchen Faucet (Cold)	Non-Applicable					Placarded for Non-Drinking Use
WSB-0721	Food Prep	1036	Spray Nozzle	Non-Applicable					Placarded for Non-Drinking Use
WSB-0722	Food Prep	1036	Kitchen Faucet (Cold)	Non-Applicable					Placarded for Non-Drinking Use
WSB-0723	Food Prep Ladies Locker Room	1036C	Tempered Water Outlet	Non-Applicable					Placarded for Non-Drinking Use
WSB-0724	Food Prep Ladies Locker Room	1036C	Tempered Water Outlet	Non-Applicable					Placarded for Non-Drinking Use
WSB-0725	Food Prep Ladies Locker Room	1036C	Hose Bib	Non-Applicable					Placarded for Non-Drinking Use
WSB-0726	Food Prep Men's Locker Room	1036D	Tempered Water Outlet	Non-Applicable					Placarded for Non-Drinking Use
WSB-0727	Food Prep Men's Locker Room	1036D	Tempered Water Outlet	Non-Applicable					Placarded for Non-Drinking Use
WSB-0728	Food Prep Men's Locker Room	1036D	Hose Bib	Non-Applicable					Placarded for Non-Drinking Use
WSB-0729		Exterior	Hose Bib	Non-Applicable					Placarded for Non-Drinking Use
WSB-0730		Exterior	Hose Bib	Non-Applicable					Placarded for Non-Drinking Use
WSB-0894	Room B2 Laundry Room	1001A	Washing Machine	Non-Applicable					Placarded for Non-Drinking Use
WSB-0895	Room B2 Laundry Room	1001A	Washing Machine	Non-Applicable					Placarded for Non-Drinking Use
WSB-0896	Bathroom	1003	Tempered Water Outlet	Non-Applicable					Placarded for Non-Drinking Use

McGuire Hall II

Outlet Number	Room Name	Space ID	Outlet Type	Potable/ Applicable/ RFI	Initial Sample Date	Initial Result (ppb)	Post Remediation Sample Date	Post Remediation Result (ppb)	Remediation Actions/Current Status
WSB-0897	Bathroom	1003	Tempered Water Outlet	Non-Applicable					Placarded for Non-Drinking Use
WSB-0898	Bathroom	1003	Hose Bib	Non-Applicable					Placarded for Non-Drinking Use
WSB-0899	Corridor From Main Entrance To Wilsonian Room	1035	Bottle Fill Station	Potable	6/6/2024	1.4			Result Below Action Level Continue O&M
WSB-0900	Food Prep	1036	Ice Machine	Potable	6/6/2024	1.0			Result Below Action Level Continue O&M
WSB-0901	Food Prep Dish Room	1036A	Washing Machine	Non-Applicable					Placarded for Non-Drinking Use
WSB-0902	Food Prep Dish Room	1036A	Washing Machine	Non-Applicable					Placarded for Non-Drinking Use
WSB-0903		Exterior	Hose Bib	Non-Applicable					Placarded for Non-Drinking Use
WSB-0904		Exterior	Hose Bib	Non-Applicable					Placarded for Non-Drinking Use
WSB-0905		Exterior	Hose Bib	Non-Applicable					Placarded for Non-Drinking Use
WSB-0906		Exterior	Hose Bib	Non-Applicable					Placarded for Non-Drinking Use

Building A - Career Center

Outlet Number	Room Name	Space ID	Outlet Type	Potable/ Applicable/ RFI	Initial Sample Date	Initial Result (ppb)	Post Remediation Sample Date	Post Remediation Result (ppb)	Remediation Actions/Current Status
WSB-0732	Room 23	1001	Classroom Faucet	Non-Applicable					Placarded for Non-Drinking Use
WSB-0733	Room 23 Children's Bathroom A	1001A	Tempered Water Outlet	Non-Applicable					Placarded for Non-Drinking Use
WSB-0734	Room 23 Children's Bathroom A	1001A	Hose Bib	Non-Applicable					Placarded for Non-Drinking Use
WSB-0735	A-21	1002	Classroom Faucet	Non-Applicable					Placarded for Non-Drinking Use
WSB-0736	A-21	1002	Classroom Faucet	Non-Applicable					Placarded for Non-Drinking Use
WSB-0737	A-21 Children's Bathroom	1002C	Tempered Water Outlet	Non-Applicable					Placarded for Non-Drinking Use
WSB-0738	A-21 Children's Bathroom	1002C	Hose Bib	Non-Applicable					Placarded for Non-Drinking Use
WSB-0740	Main Entrance Bathroom	1003	Tempered Water Outlet	Non-Applicable					Placarded for Non-Drinking Use
WSB-0741	Main Entrance Bathroom	1003	Hose Bib	Non-Applicable					Placarded for Non-Drinking Use
WSB-0742	A-24 Health Office Inner Office	1000A	Nurse's Office Sink	Non-Applicable					Placarded for Non-Drinking Use
WSB-0743	Men's Bathroom	1009	Tempered Water Outlet	Non-Applicable					Placarded for Non-Drinking Use
WSB-0744	Men's Bathroom	1009	Hose Bib	Non-Applicable					Placarded for Non-Drinking Use
WSB-0745	Men's Bathroom Custodial Closet	1009A	Slop Sink	Non-Applicable					Placarded for Non-Drinking Use
WSB-0746	Women's Bathroom	1010	Tempered Water Outlet	Non-Applicable					Placarded for Non-Drinking Use
WSB-0747	Women's Bathroom	1010	Tempered Water Outlet	Non-Applicable					Placarded for Non-Drinking Use
WSB-0748	Women's Bathroom	1010	Hose Bib	Non-Applicable					Placarded for Non-Drinking Use
WSB-0749	All-Gender Bathroom	1029	Tempered Water Outlet	Non-Applicable					Placarded for Non-Drinking Use
WSB-0750	Men's Large Bathroom	1030	Tempered Water Outlet	Non-Applicable					Placarded for Non-Drinking Use
WSB-0752	Custodial Closet	1031	Slop Sink	Non-Applicable					Placarded for Non-Drinking Use
WSB-0753	All-Gender Bathroom Right	1032	Tempered Water Outlet	Non-Applicable					Placarded for Non-Drinking Use

Building A - Career Center

Outlet Number	Room Name	Space ID	Outlet Type	Potable/ Applicable/ RFI	Initial Sample Date	Initial Result (ppb)	Post Remediation Sample Date	Post Remediation Result (ppb)	Remediation Actions/Current Status
WSB-0754	All-Gender Bathroom Middle	1033	Tempered Water Outlet	Non-Applicable					Placarded for Non-Drinking Use
WSB-0755	All-Gender Bathroom Left	1034	Tempered Water Outlet	Non-Applicable					Placarded for Non-Drinking Use
WSB-0758	A-19 Faculty	1006	Kitchen Faucet (Cold)	Potable	6/6/2024	<1.00 ND			Result Below Action Level Continue O&M
WSB-0759	Women's Bathroom Adjacent Elevator	1045	Tempered Water Outlet	Non-Applicable					Placarded for Non-Drinking Use
WSB-0760	Women's Bathroom Adjacent Elevator	1045	Tempered Water Outlet	Non-Applicable					Placarded for Non-Drinking Use
WSB-0763	Men's Bathroom	1046	Tempered Water Outlet	Non-Applicable					Placarded for Non-Drinking Use
WSB-0764	Men's Bathroom	1046	Tempered Water Outlet	Non-Applicable					Placarded for Non-Drinking Use
WSB-0765	Room 203A	1047	Art Faucet	Non-Applicable					Placarded for Non-Drinking Use
WSB-0766	All-Gender Bathroom Adjacent to 208	1049	Tempered Water Outlet	Non-Applicable					Placarded for Non-Drinking Use
WSB-0767	All-Gender Bathroom Adjacent to 207	1052	Tempered Water Outlet	Non-Applicable					Placarded for Non-Drinking Use
WSB-0768	Custodial Closet	1053	Slop Sink	Non-Applicable					Placarded for Non-Drinking Use
WSB-0769	Women's Bathroom Across from Room 103B	0012	Tempered Water Outlet	Non-Applicable					Placarded for Non-Drinking Use
WSB-0770	Women's Bathroom Across from Room 103B	0012	Tempered Water Outlet	Non-Applicable					Placarded for Non-Drinking Use
WSB-0773	Men's Room Across from Room 103A	0011	Tempered Water Outlet	Non-Applicable					Placarded for Non-Drinking Use
WSB-0774	Men's Room Across from Room 103A	0011	Tempered Water Outlet	Non-Applicable					Placarded for Non-Drinking Use
WSB-0775	Restroom Adjacent Room 112	0008	Tempered Water Outlet	Non-Applicable					Placarded for Non-Drinking Use
WSB-0776	All-Gender Bathroom Adjacent Room 111	0005	Tempered Water Outlet	Non-Applicable					Placarded for Non-Drinking Use
WSB-0777	Custodial Closet Across from Room 112	0004	Slop Sink	Non-Applicable					Placarded for Non-Drinking Use
WSB-0779	105 Gymnasium Kitchen	0002B	Hand Wash Only	Non-Applicable					Placarded for Non-Drinking Use
WSB-0780	105 Gymnasium Kitchen	0002B	Kitchen Faucet (Cold)	Non-Potable	6/6/2024	5.2	8/9/2024	1.7	Result Below Action Level Continue O&M

Building A - Career Center

Outlet Number	Room Name	Space ID	Outlet Type	Potable/ Applicable/ RFI	Initial Sample Date	Initial Result (ppb)	Post Remediation Sample Date	Post Remediation Result (ppb)	Remediation Actions/Current Status
WSB-0781	105 Gymnasium Kitchen	0002B	Kitchen Faucet (Cold)	Non-Applicable					Placarded for Non-Drinking Use
WSB-0782	105 Gymnasium Kitchen	0002B	Spray Nozzle	Non-Applicable					Placarded for Non-Drinking Use
WSB-0783	105 Gymnasium Kitchen	0002B	Kitchen Faucet (Cold)	Non-Applicable					Placarded for Non-Drinking Use
WSB-0784	105 Gymnasium Kitchen	0002B	Ice Machine	Potable	6/6/2024	OOS			Testing Required Before Return to Service
WSB-0873	Main Entrance	1005	Water Cooler	Potable	6/6/2024	<1.00 ND			Result Below Action Level Continue O&M
WSB-0874	Main Entrance	1005	Bottle Fill Station	Potable	6/6/2024	<1.00 ND			Result Below Action Level Continue O&M
WSB-0875	Basement Corridor	0014	Water Cooler	Potable	6/6/2024	<1.00 ND			Result Below Action Level Continue O&M
WSB-0876	Basement Corridor	0014	Bottle Fill Station	Potable	6/6/2024	<1.00 ND			Result Below Action Level Continue O&M
WSB-0888	Hallway from 201A to 225A	1056	Bottle Fill Station	Potable	6/6/2024	<1.00 ND			Result Below Action Level Continue O&M
WSB-0889	Hallway from 201A to 225A	1056	Water Cooler	Potable	6/6/2024	<1.00 ND			Result Below Action Level Continue O&M
WSB-0890	Hallway from 201A to 225A	1056	Bottle Fill Station	Potable	6/6/2024	<1.00 ND			Result Below Action Level Continue O&M
WSB-0891	Hallway from 201A to 225A	1056	Water Cooler	Potable	6/6/2024	<1.00 ND			Result Below Action Level Continue O&M
WSB-0892	105 Gymnasium Room 107 Break Area	0002A	Kitchen Faucet (Cold)	Potable	6/6/2024	1.5			Result Below Action Level Continue O&M
WSB-0893		Exterior	Hose Bib	Non-Applicable					Placarded for Non-Drinking Use

Sunken Meadow State Park Outdoor Learning L

Outlet Number	Room Name	Space ID	Outlet Type	Potable/ Applicable/ RFI	Initial Sample Date	Initial Result (ppb)	Post Remediation Sample Date	Post Remediation Result (ppb)	Remediation Actions/Current Status
WSB-0785	Conference Room	1003	Tempered Water Outlet	Non-Applicable					Placarded for Non-Drinking Use
WSB-0786	1st Floor Bathroom Hallway	1005	Water Cooler	Potable	6/14/2024	<1.00 ND			Result Below Action Level Continue O&M
WSB-0787	1st Floor Bathroom Hallway	1005	Bottle Fill Station	Potable	6/14/2024	<1.00 ND			Result Below Action Level Continue O&M
WSB-0788	1st Floor Bathroom Hallway	1005	Water Cooler	Potable	6/14/2024	<1.00 ND			Result Below Action Level Continue O&M
WSB-0789	Boys Bathroom	1002	Tempered Water Outlet	Non-Applicable					Placarded for Non-Drinking Use
WSB-0790	Boys Bathroom	1002	Tempered Water Outlet	Non-Applicable					Placarded for Non-Drinking Use
WSB-0791	Girls Bathroom	1000	Tempered Water Outlet	Non-Applicable					Placarded for Non-Drinking Use
WSB-0792	Girls Bathroom	1000	Tempered Water Outlet	Non-Applicable					Placarded for Non-Drinking Use
WSB-0793	Unisex Bathroom	1001	Tempered Water Outlet	Non-Applicable					Placarded for Non-Drinking Use
WSB-0794	Classroom 1/2	1006	Classroom Faucet	Non-Applicable					Placarded for Non-Drinking Use
WSB-0795	Classroom 1/2	1006	Classroom Faucet	Non-Applicable					Placarded for Non-Drinking Use
WSB-0796	Classroom 1/2	1006	Classroom Faucet	Non-Applicable					Placarded for Non-Drinking Use
WSB-0797	Classroom 1/2	1006	Classroom Faucet	Non-Applicable					Placarded for Non-Drinking Use
WSB-0799	Classroom 3	1008	Classroom Faucet	Non-Applicable					Placarded for Non-Drinking Use
WSB-0800	Classroom 3	1008	Classroom Faucet	Non-Applicable					Placarded for Non-Drinking Use
WSB-0801	Custodial Closet	1007	Slop Sink	Non-Applicable					Placarded for Non-Drinking Use
WSB-0802	2nd Floor Bathroom	2000	Tempered Water Outlet	Non-Applicable					Placarded for Non-Drinking Use
WSB-0803	Exterior	Exterior	Hose Bib	Non-Applicable					Placarded for Non-Drinking Use
WSB-0804	Exterior	Exterior	Hose Bib	Non-Applicable					Placarded for Non-Drinking Use
WSB-1037		Exterior	Hose Bib	Non-Applicable					Placarded for Non-Drinking Use

Sunken Meadow State Park Outdoor Learning L

Outlet Number	Room Name	Space ID	Outlet Type	Potable/ Applicable/ RFI	Initial Sample Date	Initial Result (ppb)	Post Remediation Sample Date	Post Remediation Result (ppb)	Remediation Actions/Current Status
WSB-1038		Exterior	Hose Bib	Non-Applicable					Placarded for Non-Drinking Use
WSB-1068	Classroom 1/2 Storage	1006A	Hose Bib	Non-Applicable					Placarded for Non-Drinking Use

Caleb Smith Outdoor Learning Lab

Outlet Number	Room Name	Space ID	Outlet Type	Potable/ Applicable/ RFI	Initial Sample Date	Initial Result (ppb)	Post Remediation Sample Date	Post Remediation Result (ppb)	Remediation Actions/Current Status
WSB-0807	Kitchen	1002	Kitchen Faucet (Cold)	Potable	6/13/2024	<1.00 ND			Result Below Action Level Continue O&M
WSB-0808	Kitchen	1002	Spray Nozzle	Potable	6/13/2024	<1.00 ND			Result Below Action Level Continue O&M
WSB-0809	Boys Bathroom	1003	Bathroom Faucet	Non-Applicable					Placarded for Non-Drinking Use
WSB-0810	Boys Bathroom	1003	Bathroom Faucet	Non-Applicable					Placarded for Non-Drinking Use
WSB-0811	Corridor From Kitchen To Girls Bathroom	1005	Water Fountain-No Chiller	Potable	6/13/2024	1.1			Result Below Action Level Continue O&M
WSB-0812	Girls Bathroom	1004	Bathroom Faucet	Non-Applicable					Placarded for Non-Drinking Use
WSB-0813	Girls Bathroom	1004	Bathroom Faucet	Non-Applicable					Placarded for Non-Drinking Use
WSB-1039		Exterior	Hose Bib	Non-Applicable					Placarded for Non-Drinking Use

Caleb Smith Walden Classroom

Outlet Number	Room Name	Space ID	Outlet Type	Potable/ Applicable/ RFI	Initial Sample Date	Initial Result (ppb)	Post Remediation Sample Date	Post Remediation Result (ppb)	Remediation Actions/Current Status
WSB-0814	Entrance Vestibule	1000	Water Fountain-No Chiller	Potable	6/13/2024	2.0			Result Below Action Level Continue O&M
WSB-0815	Server Room	1002	Classroom Faucet	Non-Applicable					Placarded for Non-Drinking Use
WSB-0816	Girls Bathroom	1005	Bathroom Faucet	Non-Applicable					Placarded for Non-Drinking Use
WSB-0817	Boys Bathroom	1004	Bathroom Faucet	Non-Applicable					Placarded for Non-Drinking Use
WSB-0819		Exterior	Hose Bib	Non-Applicable					Placarded for Non-Drinking Use
WSB-1040	Kitchen	2001	Kitchen Faucet (Cold)	Non-Applicable					Placarded for Non-Drinking Use
WSB-1041	Kitchen	2001	Spray Nozzle	Non-Applicable					Placarded for Non-Drinking Use
WSB-1042	Bathroom	2003	Bathroom Faucet	Non-Applicable					Placarded for Non-Drinking Use
WSB-1043		Exterior	Hose Bib	Non-Applicable					Placarded for Non-Drinking Use

Wilson Tech Aviation Facility

Outlet Number	Room Name	Space ID	Outlet Type	Potable/ Applicable/ RFI	Initial Sample Date	Initial Result (ppb)	Post Remediation Sample Date	Post Remediation Result (ppb)	Remediation Actions/Current Status
WSB-0821	Custodial Room 133	N/A	Slop Sink	Non-Applicable					Placarded for Non-Drinking Use
WSB-0822	Faculty Womens Bathroom	N/A	Bathroom Faucet	Non-Applicable					Placarded for Non-Drinking Use
WSB-0823	Faculty Womens Bathroom	N/A	Bathroom Faucet	Non-Applicable					Placarded for Non-Drinking Use
WSB-0824	Faculty Mens Bathroom	N/A	Bathroom Faucet	Non-Applicable					Placarded for Non-Drinking Use
WSB-0825	Faculty Mens Bathroom	N/A	Bathroom Faucet	Non-Applicable					Placarded for Non-Drinking Use
WSB-0826	Student Mens Bathroom	N/A	Bathroom Faucet	Non-Applicable					Placarded for Non-Drinking Use
WSB-0827	Student Womens Bathroom	N/A	Bathroom Faucet	Non-Applicable					Placarded for Non-Drinking Use
WSB-0828	Main Corridor	N/A	Water Cooler	Potable	6/5/2024	<1.00 ND			Result Below Action Level Continue O&M
WSB-0829	Main Corridor	N/A	Water Cooler	Potable	6/5/2024	<1.00 ND			Result Below Action Level Continue O&M
WSB-0830	Main Corridor	N/A	Bottle Fill Station	Potable	6/5/2024	<1.00 ND			Result Below Action Level Continue O&M
WSB-0831	Powerplant Lab 109	N/A	Slop Sink	Non-Applicable					Placarded for Non-Drinking Use
WSB-0832	Hangar 108	N/A	Slop Sink	Non-Applicable					Placarded for Non-Drinking Use
WSB-0833	Airframe Lab 110	N/A	Slop Sink	Non-Applicable					Placarded for Non-Drinking Use
WSB-0834	Hydraulic Lab 120	N/A	Slop Sink	Non-Applicable					Placarded for Non-Drinking Use
WSB-0835	Nurse Assisting	N/A	Classroom Faucet	Non-Applicable					Placarded for Non-Drinking Use
WSB-1044	Hangar 108	N/A	Eye Wash	Non-Applicable					Placarded for Non-Drinking Use
WSB-1045	Powerplant Lab 109	N/A	Eye Wash	Non-Applicable					Placarded for Non-Drinking Use
WSB-1046	Hydraulic Lab 120	N/A	Eye Wash	Non-Applicable					Placarded for Non-Drinking Use
WSB-1047	Airframe Lab 110	N/A	Eye Wash	Non-Applicable					Placarded for Non-Drinking Use
WSB-1048	Utilities 116	N/A	Eye Wash	Non-Applicable					Placarded for Non-Drinking Use

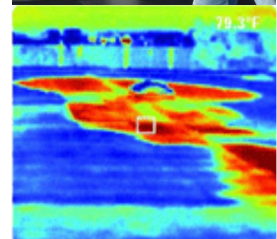
Wilson Tech Aviation Facility

Outlet Number	Room Name	Space ID	Outlet Type	Potable/ Applicable/ RFI	Initial Sample Date	Initial Result (ppb)	Post Remediation Sample Date	Post Remediation Result (ppb)	Remediation Actions/Current Status
WSB-1049	Water Service 112	N/A	Hose Bib	Non-Applicable					Placarded for Non-Drinking Use
WSB-1050		Exterior	Hose Bib	Non-Applicable					Placarded for Non-Drinking Use

L.A. Wilson Technological Central Campus

Outlet Number	Room Name	Space ID	Outlet Type	Potable/ Applicable/ RFI	Initial Sample Date	Initial Result (ppb)	Post Remediation Sample Date	Post Remediation Result (ppb)	Remediation Actions/Current Status
WSB-1380	Exterior	Exterior	Hose Bib	Non-Applicable					Placarded for Non-Drinking Use
WSB-1381	Exterior	Exterior	Hose Bib	Non-Applicable					Placarded for Non-Drinking Use
WSB-1382	Exterior	Exterior	Hose Bib	Non-Applicable					Placarded for Non-Drinking Use
WSB-1383	Exterior	Exterior	Hose Bib	Non-Applicable					Placarded for Non-Drinking Use
WSB-1384	Exterior	Exterior	Hose Bib	Non-Applicable					Placarded for Non-Drinking Use
WSB-1385	Exterior	Exterior	Hose Bib	Non-Applicable					Placarded for Non-Drinking Use
WSB-1386	Exterior	Exterior	Hose Bib	Non-Applicable					Placarded for Non-Drinking Use

Chain of Custody & Laboratory Analysis



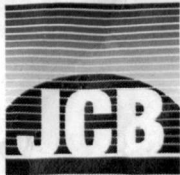
J.C. Broderick & Associates, Inc.

Environmental Consulting & Testing

1775 Expressway Drive North

Hauppauge, New York 11788

631.584.5492 fax 631.584.3395



Lead in Water: Chain of Custody for

062455465

J. C. BRODERICK AND ASSOCIATES, INC.

1775 Expressway North Hauppauge, NY 11788

TEL: (631) 584-5492 FAX: (631) 584-3395

JCB #:

23-53913

Building:

L.A. Wilson Technological Center

LWTC

Client:

Western Suffolk BOCES

Retest/New Install []

Turn Around: Normal 1 wk Rush

Sample ID	Functional Space Type	AHERA ID	Common Room Name	Outlet Type	Sample Date	Sample Time
WSB-1073	CR	1004	Cosmetology	WF	8/9/2024	10:47:00 AM
WSB-1074	CR	1004	Cosmetology	WC	8/9/2024	10:47:00 AM
WSB-1075	CR	1006	Multi Services Room	WF	8/9/2024	10:50:00 AM
WSB-1076	CR	1006	Multi Services Room	WC	8/9/2024	10:50:00 AM
WSB-1077	HA	1019	Corridor Outside Room 102	WF	8/9/2024	10:53:00 AM
WSB-1078	HA	1019	Corridor Outside Room 102	WC	8/9/2024	10:53:00 AM

Samples Submitted 6

RECEIVED
EHSL ANALYTICAL, INC.
CARLE PLACE, NY
2024 AUG 12 P 12:52

Pb 200.8 *[Signature]* 8/14/24

ing Address

el Hill Road

rt, NY 11768

Analysis Type: ELAP 200.5

Lab Received: *8/12/24 12:52*

Signature: *[Signature]*

Samplers Name: Daniel Smalls

Samplers Signature: *[Signature]*

JCB Project Manager: George Greve

**EMSL Analytical, Inc.**

528 Mineola Avenue, Carle Place, NY, 11514
 Telephone: 516.997.7251 Fax:856-786-5974
 EMSL-CP-06

EMSL Order ID: 062455465
LIMS Reference ID: EC55465
EMSL Customer ID: JCBR50

Attention: George Greve
 J.C. Broderick & Associates [JCBR50]
 1775 Expressway Drive North, Suite 1
 Hauppauge, NY 11788
 (631) 584-5492
 ggreve@jcbroderick.com

Project Name: L.A. Wilson Technological Center: 152 Laurel Hill Road, Northport, NY: Western Suffolk BOCES: Project# 23-53913
Customer PO:
EMSL Sales Rep: Jeromy Bish
Received: 08/12/2024 12:52
Reported: 08/15/2024 17:01

Analytical Results

Analyte	Result	Q	DF	RL	Units	Prepared Date/Time	Analyzed Date/Time	Analyst Initials	Prep /Analytical Method
Sample: WSB-1073 Lims Reference ID: EC55465-01 Matrix: Drinking Water Sampled: 08/09/24 10:47:00									
Metals									
Lead	< 1.0		1	1.0	µg/L	08/14/24 09:53	08/14/24 09:53	SEH	EPA 200.8 (DA)/EPA 200.8
Sample: WSB-1074 Lims Reference ID: EC55465-02 Matrix: Drinking Water Sampled: 08/09/24 10:47:00									
Metals									
Lead	< 1.0		1	1.0	µg/L	08/14/24 09:54	08/14/24 09:54	SEH	EPA 200.8 (DA)/EPA 200.8
Sample: WSB-1075 Lims Reference ID: EC55465-03 Matrix: Drinking Water Sampled: 08/09/24 10:50:00									
Metals									
Lead	< 1.0		1	1.0	µg/L	08/14/24 09:58	08/14/24 09:58	SEH	EPA 200.8 (DA)/EPA 200.8
Sample: WSB-1076 Lims Reference ID: EC55465-04 Matrix: Drinking Water Sampled: 08/09/24 10:50:00									
Metals									
Lead	< 1.0		1	1.0	µg/L	08/14/24 10:02	08/14/24 10:02	SEH	EPA 200.8 (DA)/EPA 200.8
Sample: WSB-1077 Lims Reference ID: EC55465-05 Matrix: Drinking Water Sampled: 08/09/24 10:53:00									
Metals									
Lead	< 1.0		1	1.0	µg/L	08/14/24 10:03	08/14/24 10:03	SEH	EPA 200.8 (DA)/EPA 200.8
Sample: WSB-1078 Lims Reference ID: EC55465-06 Matrix: Drinking Water Sampled: 08/09/24 10:53:00									
Metals									
Lead	< 1.0		1	1.0	µg/L	08/14/24 10:04	08/14/24 10:04	SEH	EPA 200.8 (DA)/EPA 200.8

**EMSL Analytical, Inc.**

528 Mineola Avenue, Carle Place, NY, 11514
 Telephone: 516.997.7251 Fax:856-786-5974
 EMSL-CP-06

EMSL Order ID: 062455465
LIMS Reference ID: EC55465
EMSL Customer ID: JCBR50

Attention: George Greve
 J.C. Broderick & Associates [JCBR50]
 1775 Expressway Drive North, Suite 1
 Hauppauge, NY 11788
 (631) 584-5492
 ggreve@jcbroderick.com

Project Name: L.A. Wilson Technological Center: 152 Laurel Hill Road, Northport, NY: Western Suffolk BOCES: Project# 23-53913

Customer PO:
EMSL Sales Rep: Jeromy Bish
Received: 08/12/2024 12:52
Reported: 08/15/2024 17:01

Certified Analyses included in this Report

Analyte	Certifications
EPA 200.8 in Drinking Water	
Lead	06-NYSELAP

List of Certifications

Code	Description	Number	Expires
06-NYSELAP	NY NYS ELAP	11469	04/01/2025
06-California ELAP	California Water Boards	2339	04/01/2025
06-NYSDOH	New York State Department of Health	11469	04/01/2025
06-CTDPH	Connecticut Department of Public Health	PH-0249	03/31/2025
06-AIHA LAP	EMSL Analytical, Inc. Carle Place, NY AIHA-LAP, LLC-ELLAP Accredited	102344	09/01/2024

Please see the specific Field of Testing (FOT) on www.emsl.com <<http://www.emsl.com>> for a complete listing of parameters for which EMSL is certified.



EMSL Analytical, Inc.

528 Mineola Avenue, Carle Place, NY, 11514
Telephone: 516.997.7251 Fax:856-786-5974
EMSL-CP-06

EMSL Order ID: 062455465
LIMS Reference ID: EC55465
EMSL Customer ID: JCBR50

Attention: George Greve
J.C. Broderick & Associates [JCBR50]
1775 Expressway Drive North, Suite 1
Hauppauge, NY 11788
(631) 584-5492
ggreve@jcbroderick.com

Project Name: L.A. Wilson Technological Center: 152 Laurel Hill Road, Northport, NY: Western Suffolk BOCES: Project# 23-53913
Customer PO:
EMSL Sales Rep: Jeromy Bish
Received: 08/12/2024 12:52
Reported: 08/15/2024 17:01

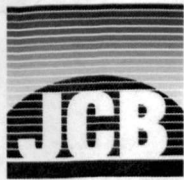
Notes and Definitions

Item	Definition
(Dig)	For metals analysis, sample was digested.
[2C]	Reported from the second channel in dual column analysis.
DF	Dilution Factor
MDL	Method Detection Limit.
ND	Analyte was NOT DETECTED at or above the detection limit.
Q	Qualifier
RL	Reporting Limit
Wet	Sample is not dry weight corrected.

Measurement of uncertainty and any applicable definitions of method modifications are available upon request. Per EPA NLLAP policy, sample results are not blank corrected.

James Han Laboratory Manager or other approved signatory

EMSL maintains liability limited to cost of analysis. Interpretation and use of test results are the responsibility of the client. This report relates only to the samples reported above, and may not be reproduced, except in full, without written approval by EMSL. EMSL bears no responsibility for sample collection activities or analytical method limitations. The report reflects the samples as received. Results are generated from the field sampling data (sampling volumes and areas, locations, etc.) provided by the client on the Chain of Custody. Samples are within quality control criteria and met method specifications unless otherwise noted.



Lead in Water: Chain of Custody for

EC55458

J. C. BRODERICK AND ASSOCIATES, INC.
1775 Expressway North Hauppauge, NY 11788
TEL: (631) 584-5492 FAX: (631) 584-3395

JCB #: 23-53913
Building: James E. Allen School
JEAS

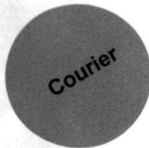
Client: Western Suffolk BOCES

Retest/New Install []
Turn Around: Normal 1 wk Rush

Sample ID	Functional Space Type	AHERA ID	Common Room Name	Outlet Type	Sample Date	Sample Time
WSB-1069	HA	1005	Corridor Along Room 519	WF	8/9/2024	10:05:00 AM
WSB-1070	HA	1005	Corridor Along Room 519	WC	8/9/2024	10:05:00 AM

Samples Submitted 2

RECEIVED
EMSL ANALYTICAL, INC.
Carle Place, NY
AUG 12 2024 PM12:49



Pb200.8 *SA* 8/14/24

Building Address
762 Deer Park Road
Dix Hills, NY 11746

Analysis Type: ELAP 200.5

Lab Received: *A. Minnifield*

Signature: *A. Minnifield*
8/12/24 12:49pm

Samplers Name: *Daniel Smalls*

Samplers Signature: *[Signature]*

JCB Project Manager: *George Greve*



EMSL Analytical, Inc.

528 Mineola Avenue, Carle Place, NY, 11514
Telephone: 516.997.7251 Fax:856-786-5974
EMSL-CP-06

EMSL Order ID: 062455458
LIMS Reference ID: EC55458
EMSL Customer ID: JCBR50

Attention: George Greve
J.C. Broderick & Associates [JCBR50]
1775 Expressway Drive North, Suite 1
Hauppauge, NY 11788
(631) 584-5492
ggreve@jcbroderick.com

Project Name: 23-53913,James E. Allen School, JEAS,
Western Suffolk BOCES, 762 Deer Park Road,
Dix Hills NY 11746
Customer PO:
EMSL Sales Rep: Jeromy Bish
Received: 08/12/2024 12:49
Reported: 08/15/2024 16:52

Analytical Results

Analyte	Result	Q	DF	RL	Units	Prepared Date/Time	Analyzed Date/Time	Analyst Initials	Prep /Analytical Method
---------	--------	---	----	----	-------	--------------------	--------------------	------------------	-------------------------

Sample: WSB-1069 Lims Reference ID: EC55458-01 Matrix: Drinking Water Sampled: 08/09/24 00:00:00

Metals

Lead	< 1.0		1	1.0	µg/L	08/14/24 09:42	08/14/24 09:42	SEH	EPA 200.8 (DA)/EPA 200.8
------	-------	--	---	-----	------	----------------	----------------	-----	--------------------------

Sample: WSB-1070 Lims Reference ID: EC55458-02 Matrix: Drinking Water Sampled: 08/09/24 00:00:00

Metals

Lead	< 1.0		1	1.0	µg/L	08/14/24 09:46	08/14/24 09:46	SEH	EPA 200.8 (DA)/EPA 200.8
------	-------	--	---	-----	------	----------------	----------------	-----	--------------------------



EMSL Analytical, Inc.

528 Mineola Avenue, Carle Place, NY, 11514
Telephone: 516.997.7251 Fax:856-786-5974
EMSL-CP-06

EMSL Order ID: 062455458
LIMS Reference ID: EC55458
EMSL Customer ID: JCBR50

Attention: George Greve
J.C. Broderick & Associates [JCBR50]
1775 Expressway Drive North, Suite 1
Hauppauge, NY 11788
(631) 584-5492
ggreve@jcbroderick.com

Project Name: 23-53913,James E. Allen School, JEAS,
Western Suffolk BOCES, 762 Deer Park Road,
Dix Hills NY 11746
Customer PO:
EMSL Sales Rep: Jeromy Bish
Received: 08/12/2024 12:49
Reported: 08/15/2024 16:52

Certified Analyses included in this Report

Analyte	Certifications
EPA 200.8 in Drinking Water	
Lead	06-NYSELAP

List of Certifications

Code	Description	Number	Expires
06-NYSELAP	NY NYS ELAP	11469	04/01/2025
06-California ELAP	California Water Boards	2339	04/01/2025
06-NYSDOH	New York State Department of Health	11469	04/01/2025
06-CTDPH	Connecticut Department of Public Health	PH-0249	03/31/2025
06-AIHA LAP	EMSL Analytical, Inc. Carle Place, NY AIHA-LAP, LLC-ELLAP Accredited	102344	09/01/2024

Please see the specific Field of Testing (FOT) on www.emsl.com <<http://www.emsl.com>> for a complete listing of parameters for which EMSL is certified.



EMSL Analytical, Inc.

528 Mineola Avenue, Carle Place, NY, 11514
Telephone: 516.997.7251 Fax:856-786-5974
EMSL-CP-06

EMSL Order ID: 062455458
LIMS Reference ID: EC55458
EMSL Customer ID: JCBR50

Attention: George Greve
J.C. Broderick & Associates [JCBR50]
1775 Expressway Drive North, Suite 1
Hauppauge, NY 11788
(631) 584-5492
ggreve@jcbroderick.com

Project Name: 23-53913,James E. Allen School, JEAS,
Western Suffolk BOCES, 762 Deer Park Road,
Dix Hills NY 11746
Customer PO:
EMSL Sales Rep: Jeromy Bish
Received: 08/12/2024 12:49
Reported: 08/15/2024 16:52

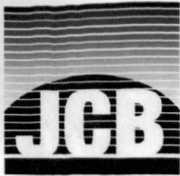
Notes and Definitions

Item	Definition
(Dig)	For metals analysis, sample was digested.
[2C]	Reported from the second channel in dual column analysis.
DF	Dilution Factor
MDL	Method Detection Limit.
ND	Analyte was NOT DETECTED at or above the detection limit.
Q	Qualifier
RL	Reporting Limit
Wet	Sample is not dry weight corrected.

Measurement of uncertainty and any applicable definitions of method modifications are available upon request. Per EPA NLLAP policy, sample results are not blank corrected.

James Han Laboratory Manager or other approved signatory

EMSL maintains liability limited to cost of analysis. Interpretation and use of test results are the responsibility of the client. This report relates only to the samples reported above, and may not be reproduced, except in full, without written approval by EMSL. EMSL bears no responsibility for sample collection activities or analytical method limitations. The report reflects the samples as received. Results are generated from the field sampling data (sampling volumes and areas, locations, etc.) provided by the client on the Chain of Custody. Samples are within quality control criteria and met method specifications unless otherwise noted.



Lead in Water: Chain of Custody for

J. C. BRODERICK AND ASSOCIATES, INC.
1775 Expressway North Hauppauge, NY 11788
TEL: (631) 584-5492 FAX: (631) 584-3395

EC55453

JCB #: 23-53913
Building: Building A - Career Center
BACC

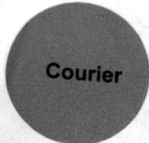
Client:
Western Suffolk BOCES

Retest/New Install
Turn Around: Normal 1 wk Rush

Sample ID	Functional Space Type	AHERA ID	Common Room Name	Outlet Type	Sample Date	Sample Time
WSB-0780	KI	0002B	105 Gymnasium Kitchen	KC	8/9/2024	10:20:00 AM

Samples Submitted 1

RECEIVED
EMSL ANALYTICAL, INC.
Carle Place, NY
AUG 12 2024 PM12:48



Pb 200-8 SH O 8/14/24

Building Address
17 Westminster Avenue
Dix Hills, NY 11746

Analysis Type: ELAP 200.5
Lab Recieved: A. Minnick
Signature: A. Minnick

Samplers Name: Daniel Smalls
Samplers Signature: [Signature]
JCB Project Manager: George Greve

**EMSL Analytical, Inc.**

528 Mineola Avenue, Carle Place, NY, 11514
Telephone: 516.997.7251 Fax:856-786-5974
EMSL-CP-06

EMSL Order ID: 062455453
LIMS Reference ID: EC55453
EMSL Customer ID: JCBR50

Attention: George Greve
J.C. Broderick & Associates [JCBR50]
1775 Expressway Drive North, Suite 1
Hauppauge, NY 11788
(631) 584-5492
ggreve@jcbroderick.com

Project Name: 23-53913, Building A- Career Center, BACC,
Western Suffolk BOCES, 17 Westminster
Avenue, Dix Hills NY 11746
Customer PO:
EMSL Sales Rep: Jeromy Bish
Received: 08/12/2024 12:48
Reported: 08/15/2024 16:48

Analytical Results

Analyte	Result	Q	DF	RL	Units	Prepared Date/Time	Analyzed Date/Time	Analyst Initials	Prep /Analytical Method
---------	--------	---	----	----	-------	-----------------------	-----------------------	---------------------	----------------------------

Sample: WSB-0780 Lims Reference ID: EC55453-01 Matrix: Drinking Water Sampled: 08/09/24 00:00:00

Metals

Lead	1.7		1	1.0	µg/L	08/14/24 09:36	08/14/24 09:36	SEH	EPA 200.8 (DA)/EPA 200.8
------	-----	--	---	-----	------	----------------	----------------	-----	--------------------------



EMSL Analytical, Inc.

528 Mineola Avenue, Carle Place, NY, 11514
Telephone: 516.997.7251 Fax:856-786-5974
EMSL-CP-06

EMSL Order ID: 062455453
LIMS Reference ID: EC55453
EMSL Customer ID: JCBR50

Attention: George Greve
J.C. Broderick & Associates [JCBR50]
1775 Expressway Drive North, Suite 1
Hauppauge, NY 11788
(631) 584-5492
ggreve@jcbroderick.com

Project Name: 23-53913, Building A- Career Center, BACC,
Western Suffolk BOCES, 17 Westminster
Avenue, Dix Hills NY 11746
Customer PO:
EMSL Sales Rep: Jeromy Bish
Received: 08/12/2024 12:48
Reported: 08/15/2024 16:48

Certified Analyses included in this Report

Analyte	Certifications
EPA 200.8 in Drinking Water	
Lead	06-NYSELAP

List of Certifications

Code	Description	Number	Expires
06-NYSELAP	NY NYS ELAP	11469	04/01/2025
06-California ELAP	California Water Boards	2339	04/01/2025
06-NYSDOH	New York State Department of Health	11469	04/01/2025
06-CTDPH	Connecticut Department of Public Health	PH-0249	03/31/2025
06-AIHA LAP	EMSL Analytical, Inc. Carle Place, NY AIHA-LAP, LLC-ELLAP Accredited	102344	09/01/2024

Please see the specific Field of Testing (FOT) on www.emsl.com <<http://www.emsl.com>> for a complete listing of parameters for which EMSL is certified.



EMSL Analytical, Inc.

528 Mineola Avenue, Carle Place, NY, 11514
Telephone: 516.997.7251 Fax:856-786-5974
EMSL-CP-06

EMSL Order ID: 062455453
LIMS Reference ID: EC55453
EMSL Customer ID: JCBR50

Attention: George Greve
J.C. Broderick & Associates [JCBR50]
1775 Expressway Drive North, Suite 1
Hauppauge, NY 11788
(631) 584-5492
ggreve@jcbroderick.com

Project Name: 23-53913, Building A- Career Center, BACC,
Western Suffolk BOCES, 17 Westminster
Avenue, Dix Hills NY 11746
Customer PO:
EMSL Sales Rep: Jeromy Bish
Received: 08/12/2024 12:48
Reported: 08/15/2024 16:48

Notes and Definitions

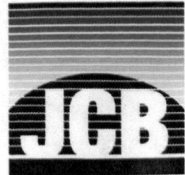
Item	Definition
(Dig)	For metals analysis, sample was digested.
[2C]	Reported from the second channel in dual column analysis.
DF	Dilution Factor
MDL	Method Detection Limit.
ND	Analyte was NOT DETECTED at or above the detection limit.
Q	Qualifier
RL	Reporting Limit
Wet	Sample is not dry weight corrected.

Measurement of uncertainty and any applicable definitions of method modifications are available upon request. Per EPA NLLAP policy, sample results are not blank corrected.

James Han Laboratory Manager or other approved signatory

EMSL maintains liability limited to cost of analysis. Interpretation and use of test results are the responsibility of the client. This report relates only to the samples reported above, and may not be reproduced, except in full, without written approval by EMSL. EMSL bears no responsibility for sample collection activities or analytical method limitations. The report reflects the samples as received. Results are generated from the field sampling data (sampling volumes and areas, locations, etc.) provided by the client on the Chain of Custody. Samples are within quality control criteria and met method specifications unless otherwise noted.

EC55455



Lead in Water: Chain of Custody for

J. C. BRODERICK AND ASSOCIATES, INC.
1775 Expressway North Hauppauge, NY 11788
TEL: (631) 584-5492 FAX: (631) 584-3395

JCB #: 23-53913
Building: Jones Hall II
JH2

Client:
Western Suffolk BOCES

Retest/New Install
Turn Around: Normal 1 wk Rush _____

Sample ID	Functional Space Type	AHERA ID	Common Room Name	Outlet Type	Sample Date	Sample Time
WSB-1071	CR	1001	E2	WF	8/9/2024	10:35:00 AM
WSB-1072	CR	1001	E2	WC	8/9/2024	10:35:00 AM

Samples Submitted 2



RECEIVED
EMSL ANALYTICAL, INC.
Carle Place, NY
AUG 12 2024 PM12:50

Pb 200.8 ~~8/11/24~~ 8/14/24

Building Address
17 Westminster Avenue
Dix Hills, NY 11746

Analysis Type: ELAP 200.5
Lab Received: A. Minnifield
Signature: A. Minnifield
8/12/24 12:50pm

Samplers Name: Daniel Smalls
Samplers Signature: [Signature]
JCB Project Manager: George Greve

**EMSL Analytical, Inc.**

528 Mineola Avenue, Carle Place, NY, 11514
 Telephone: 516.997.7251 Fax:856-786-5974
 EMSL-CP-06

EMSL Order ID: 062455455
LIMS Reference ID: EC55455
EMSL Customer ID: JCBR50

Attention: George Greve
 J.C. Broderick & Associates [JCBR50]
 1775 Expressway Drive North, Suite 1
 Hauppauge, NY 11788
 (631) 584-5492
 ggreve@jcbroderick.com

Project Name: 23-53913, Jones Hall II, JH2, Western Suffolk
 BOCES, 17 Westminster Avenue, Dix Hills NY
 11746
Customer PO:
EMSL Sales Rep: Jeromy Bish
Received: 08/12/2024 12:50
Reported: 08/15/2024 16:50

Analytical Results

Analyte	Result	Q	DF	RL	Units	Prepared Date/Time	Analyzed Date/Time	Analyst Initials	Prep /Analytical Method
---------	--------	---	----	----	-------	--------------------	--------------------	------------------	-------------------------

Sample: WSB-1071 Lims Reference ID: EC55455-01 Matrix: Drinking Water Sampled: 08/09/24 00:00:00

Metals

Lead	< 1.0		1	1.0	µg/L	08/14/24 09:40	08/14/24 09:40	SEH	EPA 200.8 (DA)/EPA 200.8
------	-------	--	---	-----	------	----------------	----------------	-----	--------------------------

Sample: WSB-1072 Lims Reference ID: EC55455-02 Matrix: Drinking Water Sampled: 08/09/24 00:00:00

Metals

Lead	< 1.0		1	1.0	µg/L	08/14/24 09:41	08/14/24 09:41	SEH	EPA 200.8 (DA)/EPA 200.8
------	-------	--	---	-----	------	----------------	----------------	-----	--------------------------



EMSL Analytical, Inc.

528 Mineola Avenue, Carle Place, NY, 11514
Telephone: 516.997.7251 Fax:856-786-5974
EMSL-CP-06

EMSL Order ID: 062455455
LIMS Reference ID: EC55455
EMSL Customer ID: JCBR50

Attention: George Greve
J.C. Broderick & Associates [JCBR50]
1775 Expressway Drive North, Suite 1
Hauppauge, NY 11788
(631) 584-5492
ggreve@jcbroderick.com

Project Name: 23-53913, Jones Hall II, JH2, Western Suffolk
BOCES, 17 Westminster Avenue, Dix Hills NY
11746

Customer PO:
EMSL Sales Rep: Jeromy Bish
Received: 08/12/2024 12:50
Reported: 08/15/2024 16:50

Certified Analyses included in this Report

Analyte	Certifications
EPA 200.8 in Drinking Water	
Lead	06-NYSELAP

List of Certifications

Code	Description	Number	Expires
06-NYSELAP	NY NYS ELAP	11469	04/01/2025
06-California ELAP	California Water Boards	2339	04/01/2025
06-NYSDOH	New York State Department of Health	11469	04/01/2025
06-CTDPH	Connecticut Department of Public Health	PH-0249	03/31/2025
06-AIHA LAP	EMSL Analytical, Inc. Carle Place, NY AIHA-LAP, LLC-ELLAP Accredited	102344	09/01/2024

Please see the specific Field of Testing (FOT) on www.emsl.com <<http://www.emsl.com>> for a complete listing of parameters for which EMSL is certified.



EMSL Analytical, Inc.

528 Mineola Avenue, Carle Place, NY, 11514
Telephone: 516.997.7251 Fax:856-786-5974
EMSL-CP-06

EMSL Order ID: 062455455
LIMS Reference ID: EC55455
EMSL Customer ID: JCBR50

Attention: George Greve
J.C. Broderick & Associates [JCBR50]
1775 Expressway Drive North, Suite 1
Hauppauge, NY 11788
(631) 584-5492
ggreve@jcbroderick.com

Project Name: 23-53913, Jones Hall II, JH2, Western Suffolk
BOCES, 17 Westminster Avenue, Dix Hills NY
11746
Customer PO:
EMSL Sales Rep: Jeromy Bish
Received: 08/12/2024 12:50
Reported: 08/15/2024 16:50

Notes and Definitions

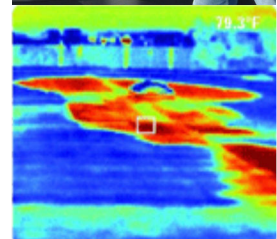
Item	Definition
(Dig)	For metals analysis, sample was digested.
[2C]	Reported from the second channel in dual column analysis.
DF	Dilution Factor
MDL	Method Detection Limit.
ND	Analyte was NOT DETECTED at or above the detection limit.
Q	Qualifier
RL	Reporting Limit
Wet	Sample is not dry weight corrected.

Measurement of uncertainty and any applicable definitions of method modifications are available upon request. Per EPA NLLAP policy, sample results are not blank corrected.

James Han Laboratory Manager or other approved signatory

EMSL maintains liability limited to cost of analysis. Interpretation and use of test results are the responsibility of the client. This report relates only to the samples reported above, and may not be reproduced, except in full, without written approval by EMSL. EMSL bears no responsibility for sample collection activities or analytical method limitations. The report reflects the samples as received. Results are generated from the field sampling data (sampling volumes and areas, locations, etc.) provided by the client on the Chain of Custody. Samples are within quality control criteria and met method specifications unless otherwise noted.

Laboratory Certifications



J.C. Broderick & Associates, Inc.

Environmental Consulting & Testing

1775 Expressway Drive North

Hauppauge, New York 11788

631.584.5492 fax 631.584.3395

NEW YORK STATE DEPARTMENT OF HEALTH
WADSWORTH CENTER



Expires 12:01 AM April 01, 2025
Issued April 01, 2024

CERTIFICATE OF APPROVAL FOR LABORATORY SERVICE

Issued in accordance with and pursuant to section 502 Public Health Law of New York State

MR. DANIEL CLARKE
EMSL ANALYTICAL, INC.
528 MINEOLA AVE.
CARLE PLACE, NY 11514

NY Lab Id No: 11469

*is hereby APPROVED as an Environmental Laboratory in conformance with the
National Environmental Laboratory Accreditation Conference Standards (2016) for the category
ENVIRONMENTAL ANALYSES POTABLE WATER
All approved analytes are listed below:*

Bacteriology

Coliform, Total / E. coli (Qualitative)	SM 21, 23 9222A,B,C SM 20, 21-23 9223B (-04) (Colilert)
E. coli (Enumeration)	SM 21, 23 9222A,B,C
Heterotrophic Plate Count	SM 20, 21-23 9215B (-04)

Metals I

Lead, Total	EPA 200.5 EPA 200.8 Rev. 5.4
-------------	---------------------------------

Miscellaneous

Asbestos	EPA 100.2
----------	-----------



Serial No.: 68787

Property of the New York State Department of Health. Certificates are valid only at the address shown and must be conspicuously posted by the laboratory. Continued accreditation depends on the laboratory's successful ongoing participation in the Program. Consumers may verify a laboratory's accreditation status online at <https://apps.health.ny.gov/pubdoh/applinks/wc/elappublicweb/>, by phone (518) 485-5570 or by email to elap@health.ny.gov.

